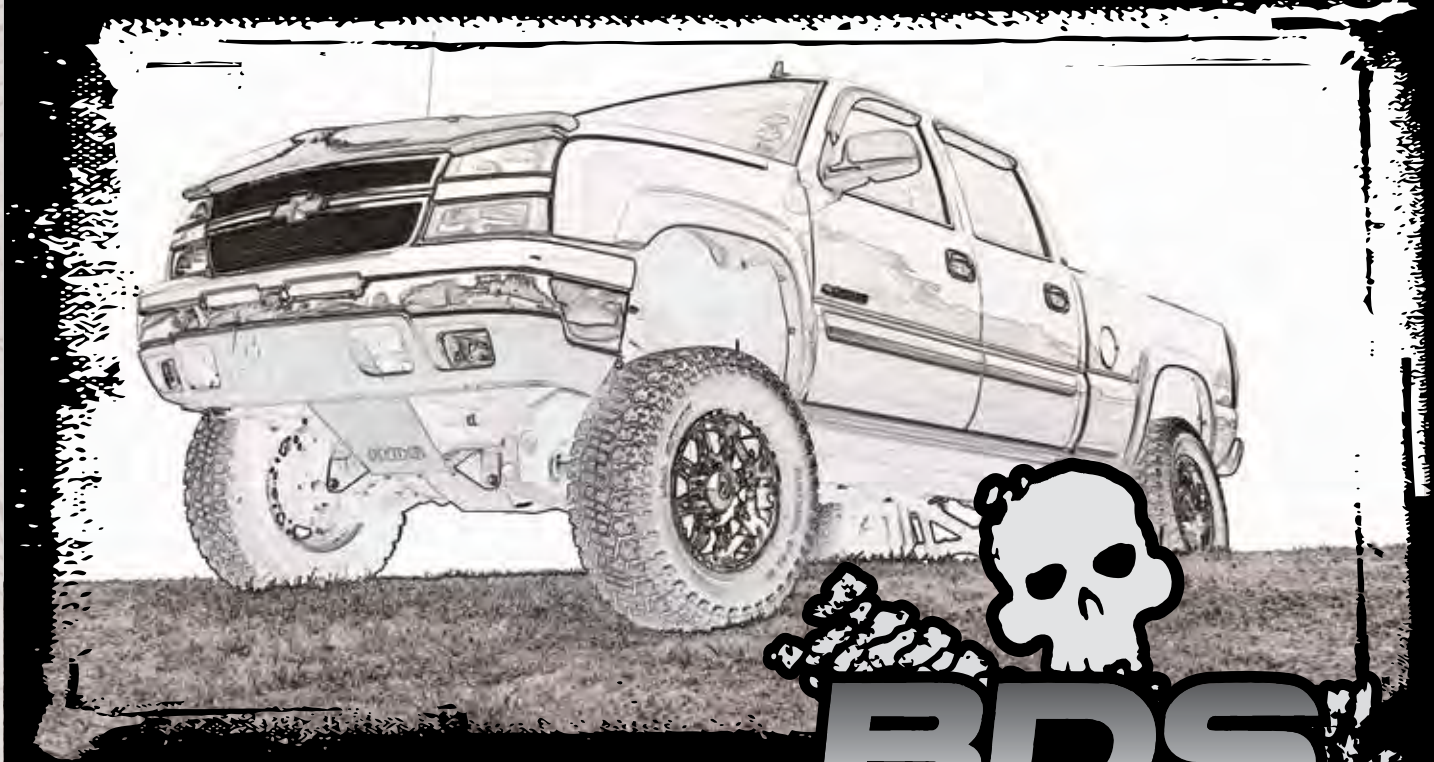
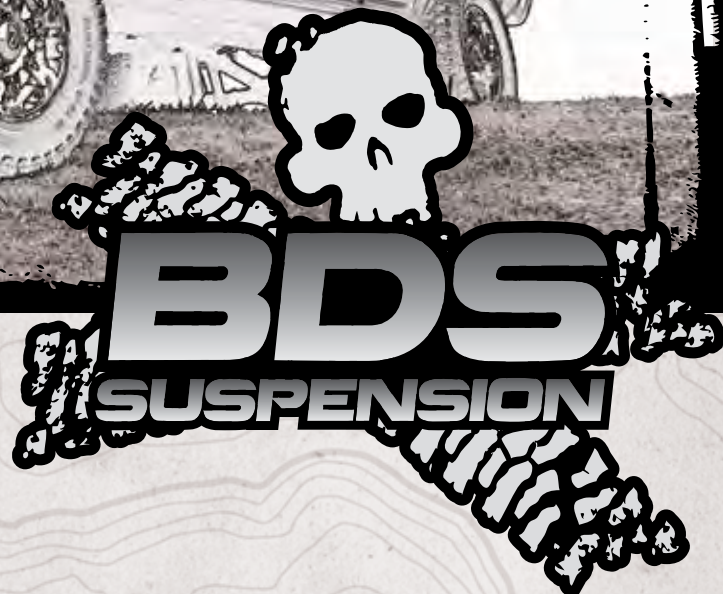


# INSTALLATION GUIDE



Part#: 021452



**HARDCORE LIMITED LIFETIME WARRANTY**

## 4.5" Suspension System

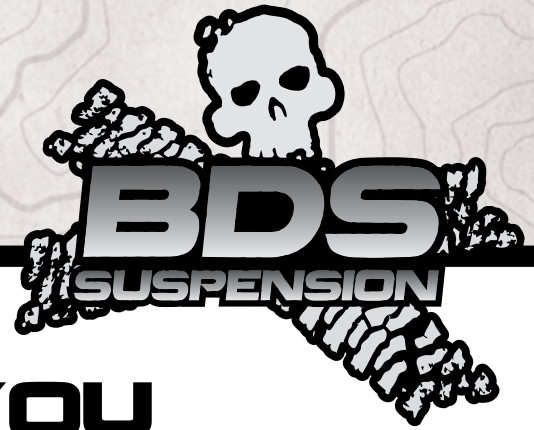
**Chevy/GM 2500/3500 4WD | 2001-2010**

Rev. 052317

491 W. Garfield Ave., Coldwater, MI 49036 • Phone: 517-279-2135

E-mail: [tech-bds@sporttruckusainc.com](mailto:tech-bds@sporttruckusainc.com)

# Read And Understand All Instructions And Warnings Prior To Installation Of System And Operation Of Vehicle.



## THANK YOU

Your truck is about to be fitted with the best suspension system on the market today. That means you will be driving the baddest looking truck in the neighborhood, and you'll have the warranty to ensure that it stays that way for years to come.

Thank you for choosing BDS Suspension!

### BEFORE YOU START

BDS Suspension Co. recommends this system be installed by a professional technician. In addition to these instructions, professional knowledge of disassembly/ reassembly procedures and post installation checks must be known.

### FOR YOUR SAFETY

Certain BDS Suspension products are intended to improve off-road performance. Modifying your vehicle for off-road use may result in the vehicle handling differently than a factory equipped vehicle. Extreme care must be used to prevent loss of control or vehicle rollover. Failure to drive your modified vehicle safely may result in serious injury or death. BDS Suspension Co. does not recommend the combined use of suspension lifts, body lifts, or other lifting devices. You should never operate your modified vehicle under the influence of alcohol or drugs. Always drive your modified vehicle at reduced speeds to ensure your ability to control your vehicle under all driving conditions. Always wear your seat belt.

### BEFORE INSTALLATION

- Special literature required: OE Service Manual for model/year of vehicle. Refer to manual for proper disassembly/reassembly procedures of OE and related components.
- Adhere to recommendations when replacement fasteners, retainers and keepers are called out in the OE manual.
- Larger rim and tire combinations may increase leverage on suspension, steering, and related components. When selecting combinations larger than OE, consider the additional stress you could be inducing on the OE and related components.
- Post suspension system vehicles may experience drive line vibrations. Angles may require tuning, slider on shaft may require replacement, shafts may need to be lengthened or trued, and U-joints may need to be replaced.
- Secure and properly block vehicle prior to installation of BDS Suspension components. Always wear safety glasses when using power tools.
- If installation is to be performed without a hoist, BDS Suspension Co. recommends rear alterations first.
- Due to payload options and initial ride height variances, the amount of lift is a base figure. Final ride height dimensions may vary in accordance to original vehicle attitude. Always measure the attitude prior to beginning installation.



Visit [560plus.com](http://560plus.com) for more information.

### TIRES AND WHEELS

#### 2001-2007 Classic Body Style

- 33" x 12.50" w/16 x 8 and 4-1/2" back spacing
- 35" x 12.50" w/17 or 18 x 9 and 5.5" back spacing
- 35" x 12.50" w/20 x 9 and 5.75" back spacing

#### 2007-2010 New Body Style

- 33" x 12.50" w/16 x 8 and 4-1/2" back spacing
- 33" x 12.50" w/17 or 18 x 9 and 5.5" back spacing
- 33" x 12.50" w/20 x 9 and 5.75" back spacing



### BEFORE YOU DRIVE

Check all fasteners for proper torque. Check to ensure for adequate clearance between all rotating, mobile, fixed, and heated members. Verify clearance between exhaust and brake lines, fuel lines, fuel tank, floor boards and wiring harness. Check steering gear for clearance. Test and inspect brake system.

Perform steering sweep to ensure front brake hoses have adequate slack and do not contact any rotating, mobile or heated members. Inspect rear brake hoses at full extension for adequate slack. Failure to perform hose check/ replacement may result in component failure. Longer replacement hoses, if needed can be purchased from a local parts supplier.

Perform head light check and adjustment.

Re-torque all fasteners after 500 miles. Always inspect fasteners and components during routine servicing.

# CONTENTS OF YOUR KIT

021632 Standard Knuckle Box Kit		
Part #	Qty	Description
01178	1	Steering Knuckle - Drv
01179	1	Steering Knuckle - Pass
02328	2	CV Spacer
B318	1	Bag Kit
	2	02332 Weld-on Steering Stop (not required)
	1	568 Bolt Pack
	12	10mm-1.5 x 70mm SHCS

021635 Narrow Track Knuckle Box Kit		
Part #	Qty	Description
02150	1	Steering Knuckle - Drv
02151	1	Steering Knuckle - Pass
02329	2	CV Spacer
B321	1	Bag Kit
	2	02330 Brake Line Bracket
	1	578 Bolt Pack
	12	10mm-1.50 x 50mm bolt
	12	10mm washer
	2	14mm flat washer
	2	14mm-1.50 x 90mm bolt

021451 Box Kit		
Part #	Qty	Description
911109	2	Sway Bar Link
569	1	Bolt Pack - Sway Bar Links
	2	3/8"-16 nylock nut
	2	7/16"-14 nylock nut
	2	9/16"-12 x 2-3/4" bolt
	4	9/16" SAE washer
	2	9/16"-12 lock nut
	2	5/8"-11 x 1-3/4" bolt
	4	5/8" SAE washer
	2	5/8"-11 nylock nut
581	1	Bolt Pack - Torsion Bar Brackets
	6	1/2"-13 x 1-1/4" bolt
	3	1/2"-13 x 1-1/2" bolt
	6	1/2" 13 SAE washer
	8	7/16"-14 x 1-1/4" bolt
	8	7/16"-14 nylock nut
	16	7/16" USS washer
02192B	1	Differential Drop Bracket - Pass
01185B	1	Differential Drop Bracket - Drv
02194B	1	Differential Skid Plate
02343B	2	Bump Stop Bracket

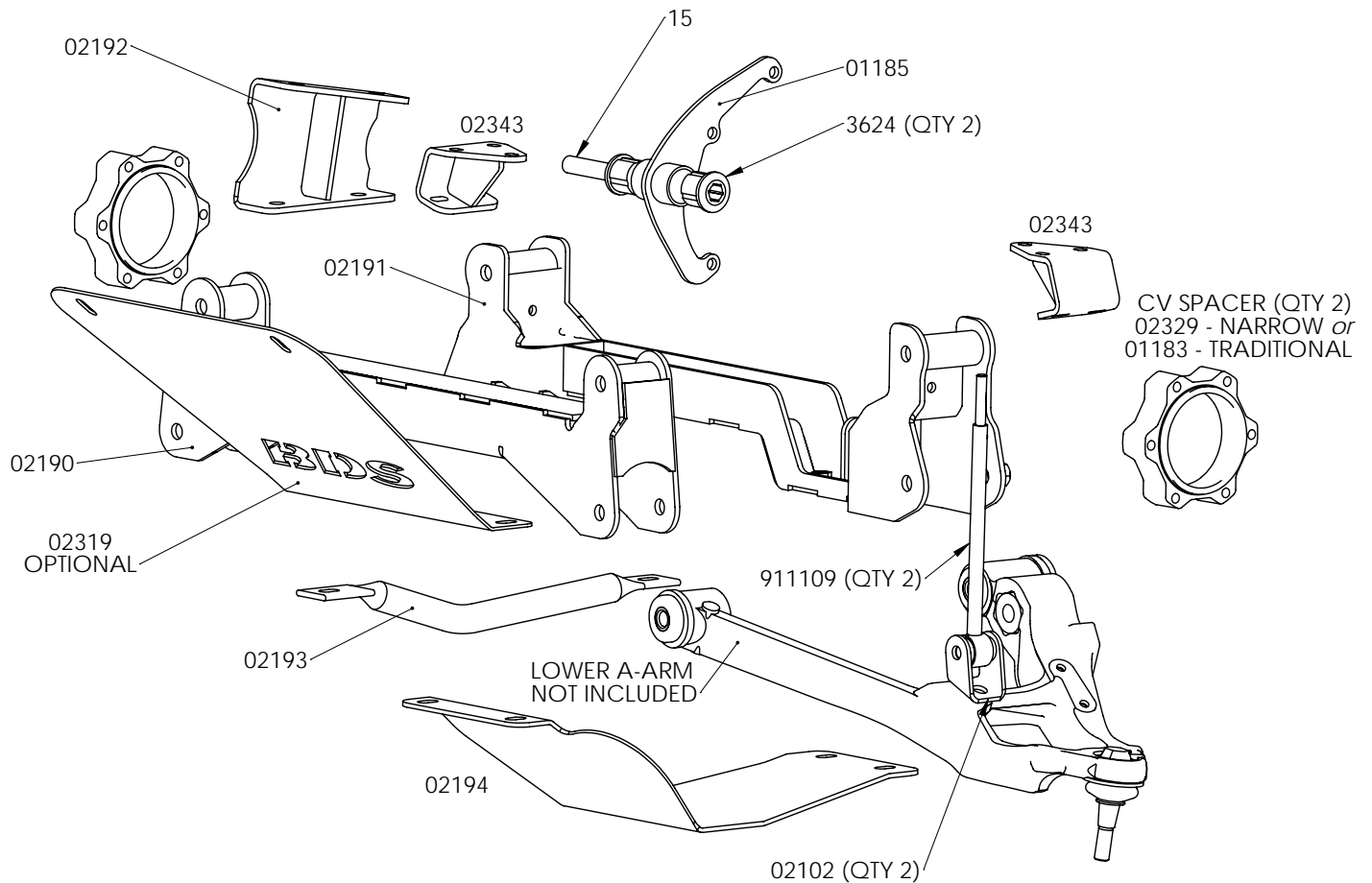
572	1	Bolt Pack - Bump Stops/Misc.
	12	3/8"-16 x 1-1/4" bolt
	18	3/8" SAE washer
	6	3/8"-16 lock nut
	4	3/8"-16 flanged nut
	6	1/4"-20 x 3/4" bolt
	6	1/4" split lock washer
	12	1/4" SAE washer
	6	1/4"-20 nylock nut
	6	wire clamps
539	1	Bolt Pack - Main
	2	5/8"-11 x 6" bolt
	2	5/8"-11 x 5" bolt
	4	5/8"-11 prevailing torque nut
	8	5/8" SAE flat washer
	1	9/16"-12 x 4-1/2" bolt
	3	9/16"-12 prevailing torque nut
	6	9/16" SAE flat washer
	2	9/16"-12 x 1-1/2" bolt
	5	10mm-1.50 x 60mm bolt
	5	10mm flat washer
	2	3/8"-16 standard hex nut
	2	3/8" SAE flat washer
	2	3/8" lock washer
B328	1	Bag Kit
	1	15 - 3/4" x 2.95" Sleeve
	1	01187 - Weld-in Plate
	2	SB35BK - Hourglass Bushing
	4	SB26BK - Stem Bushing
	4	S10076 - Stem Washer
	2	54587 - 3/4" x 1.57" Sleeve
	1	342701 - Loctite
	6	099000 - Zip Tie
B329	1	Bag Kit
	2	02102B - Sway Bar Link Bracket
	2	3624BK - Bushing - Diff. Bracket

011319 Rear Box Kit		
Part #	Qty	Description
962961212QB	4	9/16 x 2-9/16 x 12-1/2 Sq U-bolt
3KB-W58	2	3" Block - 5/8" Pin
B127	1	Bag Kit
	8	N96FH-B 9/16" high nut
	8	W96S-B 9/16" flat washer

# CONTENTS OF YOUR KIT

021452 Box Kit		
Part #	Qty	Description
02190B	1	Front Crossmember
02191B	1	Rear Crossmember
02193B	1	Differential Tube - PS
02322B	2	Torsion Bar Drop Bracket
02437	1	D/S Boot Extension
B381	2	D/S Boot Extension O-rings

B288	1	Bag Kit
	2	2M02016BK-Lg Hourglass Bushing
	2	54587 - 3/4" x 1.57" Sleeve
	1	591 Bolt Pack - Torsion Bar Brckt
	2	5/8"-11 x 6" bolt
	2	5/8"-11 x 5" bolt
	4	5/8"-11 lock nut
	8	5/8" SAE flat washer
	1	9/16"-12 x 4-1/2" bolt
	3	9/16"-12 lock nut
	6	9/16" SAE flat washer
	2	9/16"-12 x 1-1/2" bolt
	5	10mm-1.50 x 60mm bolt
	5	10mm flat washer
	2	3/8"-16 standard hex nut
	2	3/8" SAE flat washer
	2	3/8" lock washer



## TROUBLESHOOTING INFORMATION FOR YOUR VEHICLE

1. Gas models will require exhaust modification.

**TECH  
TIPS**



## INSTALLATION INSTRUCTIONS

### INSTALLATION INSTRUCTIONS

1. Park the vehicle on a flat, clean surface and block the rear wheels for safety.
2. Disconnect the positive and negative battery cables.

### SPECIAL TOOLS

Torsion bar unloading tool

### FRONT INSTALLATION

3. Raise the front of the vehicle and support with jack stands under the frame rails.
4. Remove the wheels.
5. Measure and record the length of the exposed thread on the torsion bar adjuster bolts (Fig 1). Record the lengths here for use later during the installation

DRV Side: \_\_\_\_\_ PASS Side: \_\_\_\_\_

**FIGURE 1**



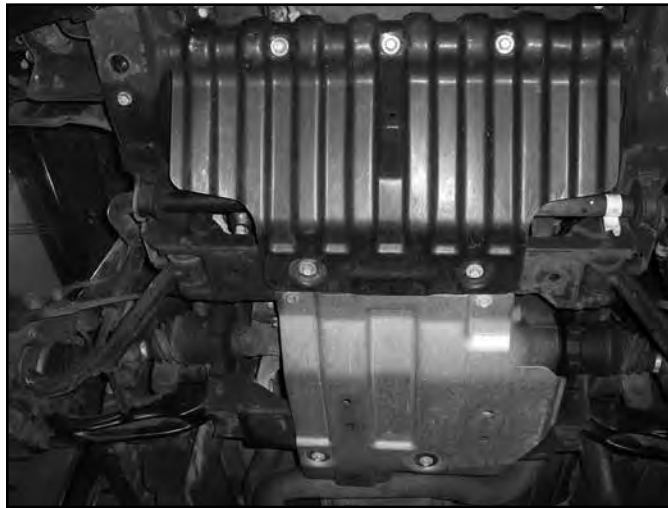
6. Unload the torsion bars but do not remove. Save adjuster bolt/retainer block.
7. Mark the unloaded torsion bars to indicate DRV side and PASS side. Also mark the bars to indicate front versus rear.
8. Remove the torsion bar adjuster plate by pushing the torsion bar forward to allow the plate to drop free. On most vehicles this will require a using a hammer/punch or air hammer. Access the end of the torsion bar through the hole in the back of the torsion bar crossmember and drive forward. Leave the torsion bars in the lower control arms. Note: Torsion bars are under extreme pressure. A proper torsion bar tool is necessary to unload the bars. A tool designed specifically for GM torsion bars (#J36202 or equivalent) is required. Most auto parts store will lend these tools for little or no charge.
9. Remove the two bolts that attach the torsion bar crossmember to the frame rails (Fig 2). Remove the torsion bar crossmember from the vehicle. Save bolts and crossmember.

**FIGURE 2**



10. Remove the torsion bars by pulling them rearward out of the lower control arms. Set the torsion bars aside.
11. Remove the front plastic splash guard, save splash guard bolts. If equipped, remove the four bolts mounting the factory belly pan to the frame (Fig 3) These will not be reused.

**FIGURE 3**



12. Disconnect the sway bar end links from the sway bar and the lower control arms (Fig 4). Discard the link assemblies.
13. Disconnect the tie rod ends from the steering knuckles. Remove the tie rod end nuts and save. Strike the knuckle near the tie rod end to dislodge the tie rod end taper (Fig 4). Remove the tie rod ends from the knuckles.
14. Disconnect the ABS brake wire from the connector at the top of the frame (Fig 5) Remove the wire from the plastic retainers on the frame and upper control arm (Fig 6).
15. Disconnect the rubber brake line brackets from the upper control arm and the steering knuckle (Fig 6). Save hardware.

**FIGURE 4**



**FIGURE 5**



**FIGURE 6**



16. Remove the two bolts mounting the brake caliper assembly to the steering knuckle and hang the caliper out of the way (Fig 7). Do not hang the caliper by the brake hose. Save mounting bolts.

**FIGURE 7**



17. If equipped, remove the rotor retaining clips from the wheels studs. These will not be reused. Remove the brake rotor and set aside.
18. Carefully remove the hub dust cover. Save cover (Fig 8).
19. Remove the CV axle nut and washer. Save hardware.
20. Remove the CV axle flange bolts at the differential (Fig 9). There are 6 bolts per side. Discard the bolts.



**FIGURE 8**



**FIGURE 9**



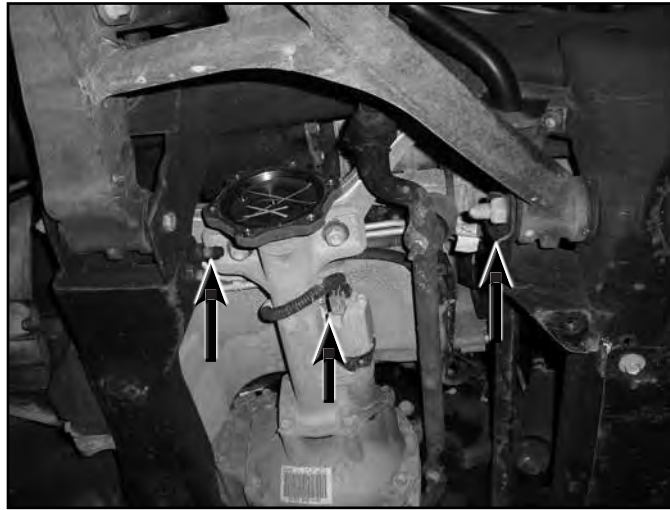
21. Remove the upper ball joint nut. Thread the nut back on by hand one or two turns. Strike the knuckle near the upper ball joint to release the taper. Remove the upper ball joint nut (save) and remove the ball joint from the knuckle. Allow the knuckle to swing out and remove the CV axle from the hub (Fig 10). Mark the CV axle to indicate DRV side and PASS side.

**FIGURE 10**



22. Remove the lower ball joint nut and thread back on by hand one or two turns. Strike the knuckle near the ball joint to release the taper. Remove the ball joint nut and remove the knuckle from the lower control arm. Save the lower ball joint nut and set the knuckle/hub assembly aside.
23. Disconnect the shocks from the frame and lower control arm, keep the lower shock hardware. Remove shocks. The shocks will not be reused.
24. Remove the front and rear lower control arm bolts and remove the control arms from the vehicle (Fig 11) Save the control arms and mounting hardware.

**FIGURE 11**



25. Remove the factory bump stops from the frame (Fig 12). Save bump stops and hardware.
26. Make an alignment mark on the front driveshaft and front differential input yoke. Remove the four bolts/clamps from the yoke and remove the front driveshaft from the differential (Fig 13). Remove the driveshaft from the transfer case. Save the driveshaft hardware.

**FIGURE 12**



**FIGURE 13**



27. Remove the four bolts mounting the rear crossmember to the rear lower control arm pockets (Fig 14). Remove the crossmember from the vehicle. The crossmember and hardware will not be reused.

**FIGURE 14**



28. Disconnect the electrical connector from the front differential actuator (Fig 11) Remove the wire from the three plastic wire retainers along the top of the differential.
29. Disconnect the axle breather tube from the driver's side of the differential.
30. Loosen but do not remove all of the front differential mounting bolts. There are two on the passenger's side, one on the upper front driver's side and one on the lower rear driver's side.
31. Locate the remaining wing of the rear crossmember on the lower rear driver's side control arm pocket. This portion of the frame must be removed to clear the front differential in its new, lower position. A precise measurement and cut is outlined later in the instructions but to make removing the differential easier the wing portion can be cut off now. Using a reciprocating saw (recommended), hack saw or cut-off wheel, remove the wing just inside of the control arm pocket (Fig 15). Take care not to cut into the differential housing or bolt. Note: Do not use any type of flame cutting as the vehicle undercoating is flammable.

**FIGURE 15**



32. Support the front differential with an appropriate jack. Remove the differential mounting hardware and lower the differential from the vehicle and set aside. Save hardware.
33. The lower rear driver's side control arm pocket must be trimmed to provide clearance for the front differential. Measure inward from the lower control arm mounting hole 1-3/4" and mark on both the front and back surfaces of the pocket (Fig 16). Make vertical cut lines at the marks and connect the cut lines along the top surface of the pocket.

**FIGURE 16**



34. Using a reciprocating saw (recommended), hack saw or cut-off wheel, cut the pocket along cut lines.
35. With the control arm pocket trimmed, be sure the area around the cut is free from grease, oil and undercoating. Locate the provided weld-in support plate (01187) and place it up to the frame where the cut was made. The angled edge of the plate goes to the top. Align the top of the plate to the top cut edge of the control arm pocket and center the plate horizontally in the pocket. The bottom edge of the plate must be at least 1/4" above the bottom edge of the factory pocket. Tack weld the plate in place. Note: It is important to completely remove the undercoating from the weld area to avoid weld contamination and keep the undercoating from igniting/melting.
36. With the support plate tack in place, double check the location and then finish welding it in place (Fig 17). Allow the area to cool slowly and then paint any exposed metal to prevent rust.

**FIGURE 17**



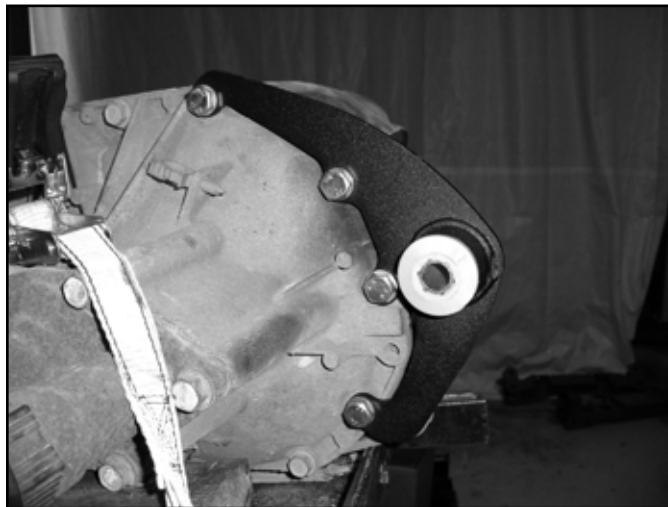
37. The front upper mount bushing of the differential must be removed to provided adequate steering clearance. Mark a cut line around the mount that is flush with the top of the differential housing. Using a reciprocating saw (recommended) or hack saw, cut the mount off of the differential (Fig 18). Take extra care not to cut into the differential housing.

**FIGURE 18**



38. Install the provided large bushings (3624RB) and 0.750" OD x 2.950" long sleeve (15) into the eye of the new driver's side differential bracket (01185).
39. Place the driver's side differential bracket up to the front of the differential to indicate the four housing bolts that need to be removed. Remove the four bolts, place the bracket in position and fasten with new 10mm x 60mm bolt and washers (BP 539). Use Loctite on the bolt threads and torque to 30 ft-lbs (Fig 19).

**FIGURE 19**



40. Locate the new passenger's side differential bracket (02192). Install the bracket on the existing studs on the passenger's side factory bracket. Fasten with the original nuts and washers. When installed the open side of the bracket will face inward and the bracket will taper down as it goes to the rear (Fig 20). Torque nuts to 65 ft-lbs.

**FIGURE 20**



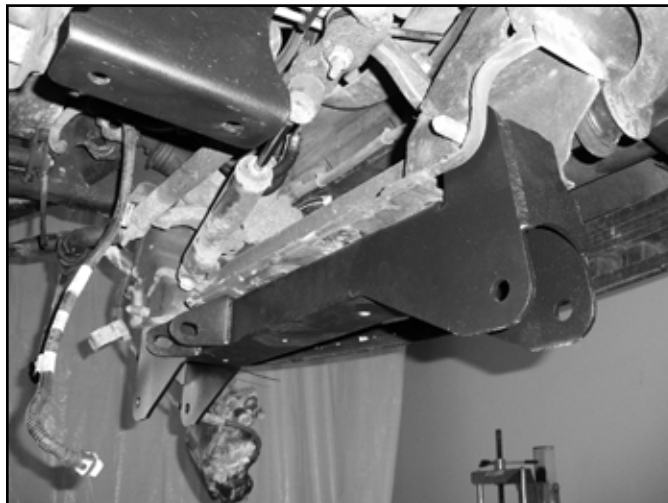
41. Inspect the inside factory control arm mounting holes. There will be a sharp lip left from the original control arm/hardware. Use a file or rotary grinder to remove the sharp lip left from the control arms (Fig 21). This will allow the new cross members to be installed easily.

**FIGURE 21**



42. Locate the new front crossmember (02190). Install the crossmember in the front lower control arm pockets so that the two longer differential mounting tabs are on the driver's side pointing rearward (Fig 22). Fasten the crossmember with the original lower control arm hardware. Run the bolts from front to rear. Leave hardware loose.

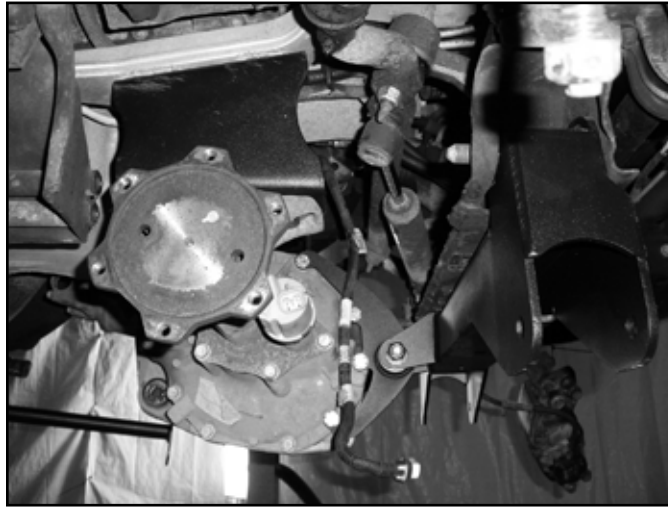
**FIGURE 22**



43. Using an appropriate jack, raise the differential up into the vehicle. Align the new driver's side differential bracket in the front crossmember mounting tabs. Align the passenger's side mounting holes to the new bracket (Fig 23). Fasten the driver's side mount with a 9/16" x 4-1/2"

bolt, nut and 9/16" SAE washers. Fasten the passenger's side with 9/16" x 1-1/2" bolts, nuts and 9/16" SAE washers (BP 539). Leave the driver's side bolt loose. Tighten the passenger's side bolts just enough to make the two mounting surfaces set flush.

**FIGURE 23**



**FIGURE 24**



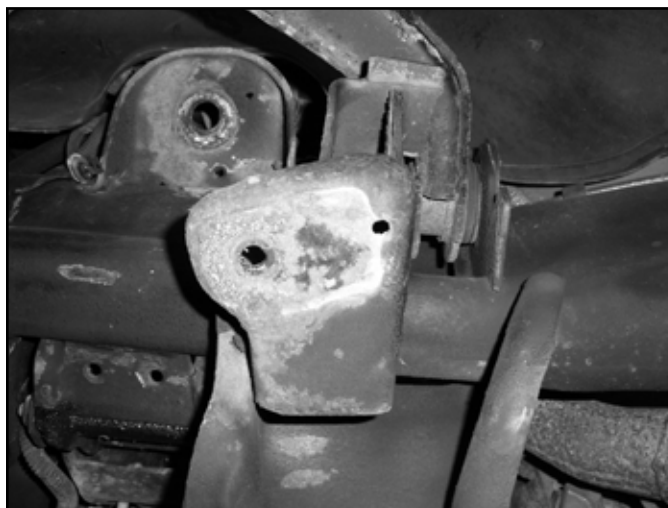
44. Install the rear crossmember in the rear lower control arm pockets so that the differential mount lines up with the differential (Fig 24, 25) Fasten the crossmember with the original lower control arm hardware. Run the bolts from front to rear. Leave hardware loose.

**FIGURE 25**



45. Fasten the differential to the new mount in the rear crossmember with the original rear differential bolt/nut. Run the bolt from the outside in.
46. Locate the two existing holes in the original bump stop mounts on the frame. Drill the small hole out to 7/16" (Fig 26).

**FIGURE 26**



47. Locate the new provided bump stop brackets (02343). Place a bump stop bracket up to the original mount and line up the center of the two slots with the two holes in the factory mount. Using the third slot in the bracket as a guide, mark the center position to be drilled (Fig 27). Remove the bracket and drill a 7/16" hole at the mark.

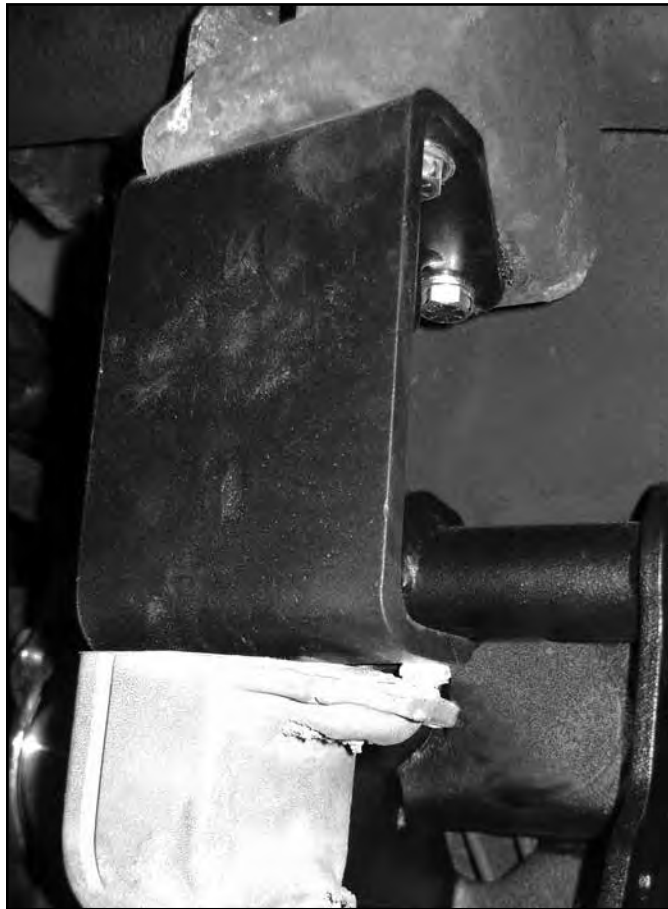
**FIGURE 27**



48. With the holes drilled, attach the new brackets to the frame with 3/8" x 1-1/4" bolts, nuts and 3/8" washers (BP 572). The two outer bolts should be all the way to the outer edge of the slots in the brackets (bracket push inward toward frame as far as possible). Torque bolts to 30 ft-lbs. Install the factory bump stop on the new brackets with the original mounting nut. Install the bump stop so it is offset toward the front of the vehicle (Fig 28). Tighten bump stop hardware securely.



**FIGURE 28**



49. Install the factory lower control arms into the new crossmembers. Fasten the control arms with 5/8" x 5" bolts (front), 5/8" x 6" bolts (rear), nuts and 5/8" SAE washers (BP 539). Run the bolts from the front to rear (Fig 29). Leave hardware loose.

**FIGURE 29**



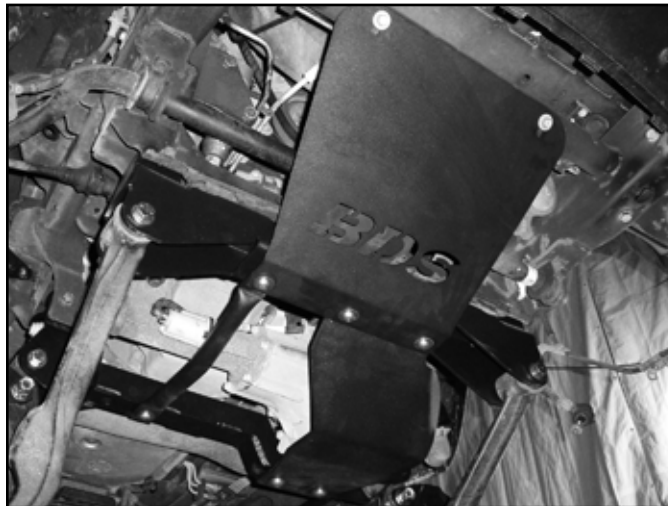
50. Go back and torque the four differential bolts to 90 ft-lbs. Torque the factory control arm pocket bolts to 125 ft-lbs. DO NOT tighten the new control arm bolts at this time. This will be done at the end of the installation.
51. Locate the new differential skid plate (02194). Position the skid plate so that it aligns to holes with the welded nuts on the bottom driver's side of the rear crossmember (Fig 30). Fasten the skid plate with 1/2" x 1-1/4" bolts and washers (BP 581). Snug hardware so the front of the skid plate sets up near the bottom of the front crossmember.
52. Locate the new crossmember support tube (02193). The tube is formed to clear the differential when installed. Position the support tube so it set properly against the bottom of the front and rear crossmembers and aligned to the mounting holes. Fasten the tube to the rear crossmember with a 1/2" x 1-1/4" bolt and washer (BP 591). Again, snug hardware so the tube sets up near the bottom of the front crossmember (Fig 30).

**FIGURE 30**



53. Optional: Locate the new front "BDS" skid plate/splash guard (02319). Loosely attach the skid plate to the original splash guard mounting holes on the upper frame crossmember using the original splash guard bolts. Position the skid plate up to the bottom of the front crossmember "sandwiching" the support tube and differential skid plate. Fasten the front skid plate, differential skid plate and support tube to the front crossmember with 1/2" x 1-1/2" bolts and washers (BP 581) in the welded nuts in the crossmember (Fig 31). Apply Loctite to the bolt threads and torque to 55 ft-lbs. Note: There will be 3 extra 1/2" bolts left over from bolt pack #591.
54. If the optional front skid plate is not installed. Attach the skid plate and support tube with 1/2" x 1-1/4" bolts and washers. Note: There will be 3 extra 1/2" bolts left over from bolt pack #591.

**FIGURE 31**



55. With the front hardware tight, remove the rear bolts one at a time and apply Loctite to the threads. Reinstall and torque to 55 ft-lbs. Torque the front factory splash guard bolts to 25 ft-lbs.
56. Remove the hub bearing and brake dust shield from the factory steering knuckles (Fig 32). Be sure to note which hub goes on which side of the vehicle. Locate the hub o-ring inside the knuckle hub bore. Using a small flat head screw driver remove the o-ring for use in the new knuckle (Fig 33). Save mounting bolts, o-ring, dust shield and hub, discard the knuckle.

**FIGURE 32**



**FIGURE 33**

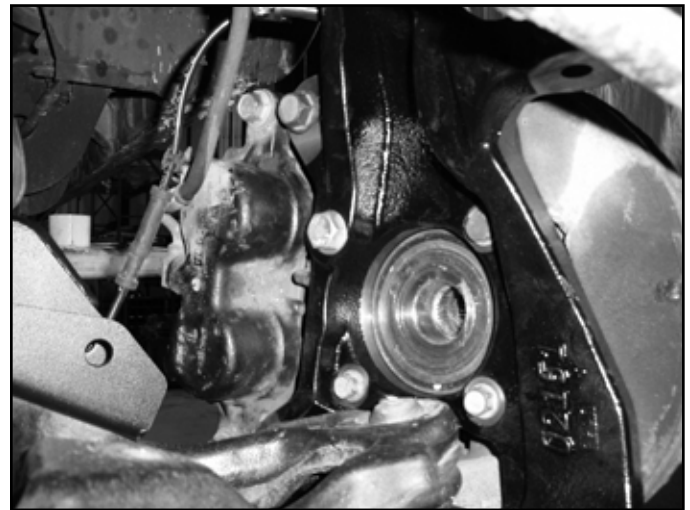


57. Locate the new steering knuckles and identify the driver's and passenger's side. Install the appropriate knuckle on the lower control arm and fasten with the original lower ball joint nut. Swing the knuckle up and attach to the upper ball joint with the original nut. Narrow Track Knuckles: Install the provided "L" shaped brake line bracket (02330) to knuckle with the upper ball joint nut. Position the bracket so the long tab is toward the rear of the vehicle (Fig 38A). Torque the upper ball joint nut to 37 ft-lbs and the lower ball joint nut to 74 ft-lbs (Fig 34A).
58. Standard Knuckle Kits Only: Install the factory hub o-ring into the new knuckle hub bore. Install the hub on the appropriate new knuckle so that the ABS line runs out under the steering arm (front - Fig 34A). Fasten the hub with the factory bolts. Apply Loctite to the bolt threads and torque to 133 ft-lbs. Note: The original brake dust shield will not be used.
59. Narrow Track Knuckle Kits Only: Install the factory hub o-ring into the new knuckle hub bore. Install original hub with the original brake dust shield on the appropriate new knuckle so that the ABS line runs out the top of the hub. Fasten the hub to the knuckle with three of the four original bolts and one of the provided 14mm x 100mm bolts/washers (BP 578). Apply Loctite to the bolt threads and torque to 133 ft-lbs. (Fig 34B)

**FIGURE 34A**

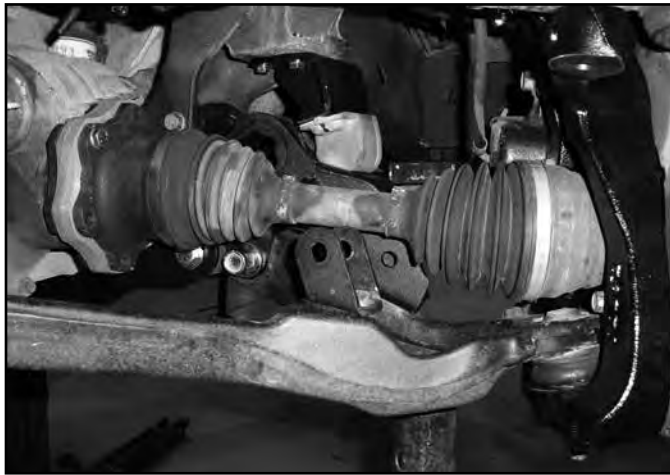


**FIGURE 34B**



60. Install the brake rotor on the hub. Install the brake calipers on the knuckles with the original bolts. Apply Loctite to the bolt threads and torque the bolts to 125 ft-lbs. Be sure the brake hose is running under the upper control arm and behind the steering knuckle.
61. Install the appropriate CV axle shaft through the hub (Fig 35). Install the original CV axle nut and washer and torque to 155 ft-lbs. Reinstall the hub dust cap.

**FIGURE 35**



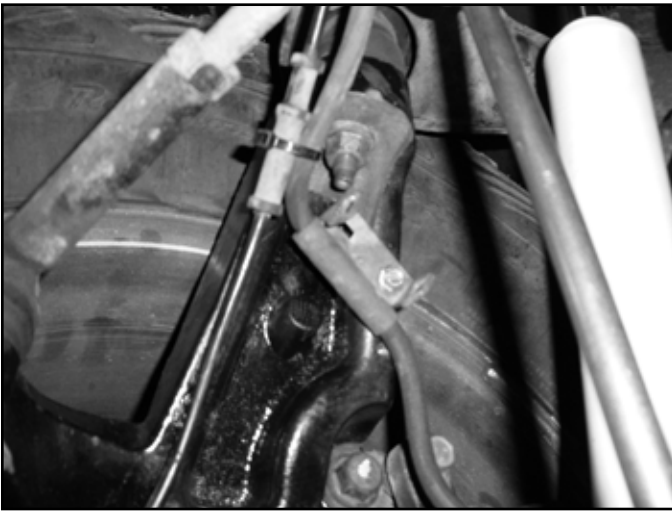
62. Position the provided CV spacer (01183 - Standard, 02329 - Narrow Track) between the CV shaft and the differential mounting flange (Fig 36). Fasten the CV and spacer to the differential flange with 10mm x 70mm (50mm - Narrow Track) bolts and 10mm washers (BP 568 - Standard, 578 - Narrow Track). Use Loctite on the bolt threads and torque to 45 ft-lbs using a crossing pattern.

**FIGURE 36**

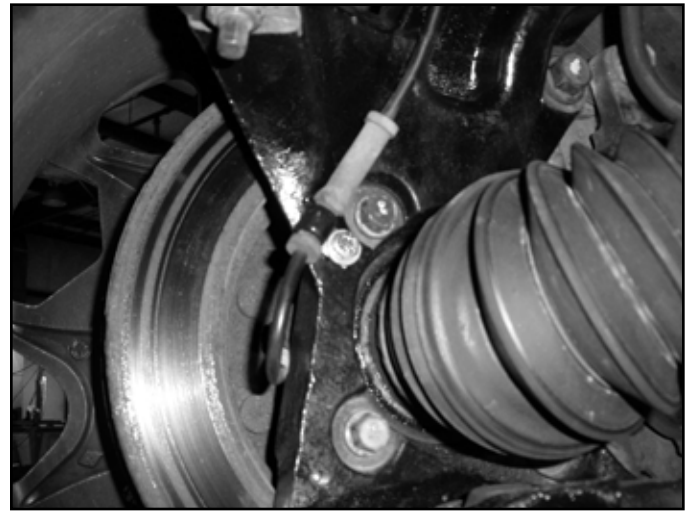


63. Standard Knuckle Kits Only: Reconnect the brake hose bracket to the upper control arms with the original bolt. Torque to 10 ft-lbs. Attach the second brake hose bracket to the holes in the back side of the steering knuckle with a provided 1/4" x 3/4" bolt and washer (BP 572). Torque to 10 ft-lbs (Fig 37A).
64. Standard Knuckle Kits Only: Route the ABS line from around the back side of the knuckle and attach to the two threaded holes with the provided wire clamps and 1/4" x 3/4" bolts and washers (BP 572). From there run the ABS line up along the brake line to the frame and reconnect to the connector and plastic retaining clip. Zip tie the ABS line to the brake line (Fig 37B).

**FIGURE 37A**



**FIGURE 37B**



65. Narrow Track Knuckle Kits Only: Reconnect the original brake hose bracket to the upper control arm with the original bolt. Torque to 10 ft-lbs. Attach the second original brake hose bracket to the new "L" bracket install on the knuckle at the upper ball joint with a provided 1/4" x 3/4" bolt, nut and washers (BP 572). Torque to 10 ft-lbs.
66. Narrow Track Knuckle Kits Only: Route the ABS wire to the factory brake line bracket that was just attached to the new "L" bracket. Attach the ABS line to the factory bracket (Fig 38B) with a provided wire clamp and 1/4" x 3/4" bolt, nut and washer (BP 572). Torque hardware to 10 ft-lbs. From there run the ABS line along the main brake line and reattach to the connector at the frame. Zip tie the ABS line to the brake line.

**FIGURE 38A**



**FIGURE 38B**



67. Remove the factory clamp and boot from the front driveshaft. Locate the driveshaft boot extension and o-rings. Install the o-rings into the appropriately sized grooves in the extension. Apply grease to the o-rings and slide the extension over the drivshaft with the large diameter first until o-ring snaps over the factory boot lip. (Fig 39) *Note: It is a tight fit over the splines.* Re-install the boot on the extension with the factory clamp.

**FIGURE 39**



68. Slide the driveshaft into the transfer case and reattach it to the differential with the original clamps/bolts. Torque bolts to 19 ft-lbs.
69. Reconnect the differential actuator wire to the actuator and fasten the wire to the differential in the original plastic clips.
70. Pull the necessary slack down for the differential breather hose to reconnect to the breather on the driver's side of the differential.
71. Install the provided offset sway bar link u-bracket (02102) on the lower control arm in the original sway bar link hole with a 5/8" x 1-3/4" bolt, nut and washers (BP 569). Position the bracket so that it offsets in toward the center of the vehicle (Fig 40a). In some cases it may be necessary to slightly clearance to hole for the 5/8" hardware.

**FIGURE 40A**



72. Locate the new front sway bar links (911109), small hourglass bushings (SB35BK) and 0.750" OD x 1.575" long sleeves (54587). Install the bushings and sleeves into the eyes of the links. Install the links into the new brackets on the lower control arms with 9/16" x 2-3/4" bolts, nuts and washers (BP 569). Run the bolts from front to rear and leave hardware loose (Fig 40b).

**FIGURE 40B**



73. Install a provided stem washer (S100776) followed by a stem bushing (SB26BK) on each sway bar link. Install both links into the sway bar and install a second stem bushing followed by a second washer. Fasten the sway bar link upper assemblies with 7/16" nylock nuts (BP 569). Leave nuts loose (Fig 41).

**FIGURE 41**



74. Attach the tie rod ends to the knuckles. Fasten with the original nuts and torque to 37 ft-lbs.
75. Install the new shocks with the new provided bushings/washers/nuts/sleeves and the factory lower bolt. Tighten the upper hardware until the bushings begin to swell. Torque the lower bolt to 75 ft-lbs.
76. Install bushings and sleeves into the torsion bar drop brackets (M02016BK bushings / 54587 sleeves).
77. Install the torsion bar drop brackets with new 9/16" x 3" bolt, and mark the centers of the slots. Remove the bracket and drill the holes out to 1/2" ~ 9/16". Repeat for opposite side.
78. Reinstall that torsion bar drop brackets with 9/16" x 3" hardware and 1/2" x 1-1/4" hardware (BP #591) (Fig 42 & 43). Do NOT tighten at this time, and do NOT install the torsion bar crossmember just yet.

**FIGURE 42**



**FIGURE 43**



79. Install the torsion bars into the lower control arms. Slide them through the arms so that there is clearance to install the torsion bar crossmember.
80. Reinstall the factory torsion bar crossmember to the drop brackets with factory hardware. Torque 9/16" and 14mm hardware to 90 ft-lbs, 1/2" hardware to 65 ft-lbs. Note: Be sure the crossmember is oriented correctly.
81. Locate the original torsion bar adjuster keys. Slide the torsion bars back into the torsion bar crossmember and into the adjuster plates. The plates should fit on the torsion bars so that they positioned roughly horizontal in the vehicle.
82. Load the torsion bars with the appropriate tool. Reinstall the adjuster bolt/retaining plate assembly. Reset the torsion bar adjuster bolt position to the original height measurement plus 1/4" (1/4" more threads exposed) taken at the beginning of the installation. This adjustment will be checked/changed at the end of the installation.

83. Install the front wheels. Torque the lug nuts to 140 ft-lbs. Lower the vehicle to the ground.
84. Bounce the front end to settle the suspension.
85. Tighten the upper sway bar link stem nuts until the bushings begin to swell. Torque the lower sway bar link bolt to 90 ft-lbs.
86. Torque the lower control arm bolts (4) to 125 ft-lbs.
87. Check all front hardware for proper torque.
88. Check all brake lines for proper clearances. Adjust as necessary.
89. Check tire/wheel clearance with the fenders/bumper as well as with the steering knuckle. It is not uncommon to trim the lower plastic valance of the bumper slightly to add proper tire clearance while turning.

## REAR INSTALLATION

90. Block the front wheels for safety. Raise the rear of the vehicle and support with jack stands under the frame rails, just ahead of the front leaf spring hangers.
91. Remove the wheels.
92. Disconnect the parking brake cable brackets (2) from the driver's side frame rail (Fig 44) Save all hardware.

**FIGURE 44**



93. Disconnect the factory brake line bracket attached driver's side frame rail. The nut is accessed on the outside of the frame (Fig 45).

**FIGURE 45**



94. Support the center of the axle with a hydraulic jack. Remove the factory shocks from the axle and frame. Save hardware and discard shocks.



## LIFT BLOCK INSTALLATION

95. With the axle still well support remove the passenger's side u-bolts. The u-bolts will not be reused. Slowly lower the axle.
96. Lower the axle just enough to install the new provided 3" lift block between the axle and the spring. Align the pin in the block with the hole in the axle and the hole in the block with the leaf spring pin. It may be necessary to loosen the driver's side u-bolts slightly to allow the axle to lower far enough to install the block.
97. Using the support jack, raise the axle so that the axle, spring and block are all touching. Install the new provided u-bolts, nuts and washers allow with the factory u-bolt plate (Fig 46). Snug u-bolts but do not tighten.

**FIGURE 46**



98. Repeat the installation on the driver's side of the vehicle. Pay special attention to all of the brake lines and wires. Do not allow them to get over-extended.

## SPRING INSTALLATION

99. Lower the axle from the spring. Remove the front spring hanger bolt and rear spring shackle-to-frame bolt. Remove the spring from the vehicle.
100. Lightly grease and install the provided bushings and sleeves in the new BDS leaf springs.
101. Remove the shackle from the factory springs and loosely install it on the corresponding end of the BDS spring.
102. Install the new spring in the vehicle with the factory hardware. Leave hardware loose.
103. Using the support jack, raise the axle so that the axle and spring are touching and align the spring center pin in the hole in the axle. Install the new provided u-bolts, nuts and washers allow with the factory u-bolt plate. Snug u-bolts but do not tighten.
104. Repeat the installation on the driver's side of the vehicle. Pay special attention to all of the brake lines and wires. Do not allow them to get over-extended.

## SPRING AND BLOCK INSTALLATION

105. Locate the brake line clamp bolt on the driver's side axle shock mount. This bolt must be trimmed flush with the inside surface of the bracket to avoid contact with the new shock (Fig 47). Trim the bolt with a reciprocating saw or cut-off wheel.

**FIGURE 47**



106. Locate the new shocks/bushings/sleeves. Install the provided hourglass bushings and sleeves in the new shocks. Install the shocks in the vehicle with the original hardware. The body of the shock must be mounted to the axle. In some cases the axle shock brackets will need to be bent open slightly to provide clearance for the new, wider shocks. This can be easily done by putting an adjustable wrench on side of bracket that needs to be formed and bending out just enough to clear the shock body. Torque shock bolts to 70 ft-lbs.
107. Reattach the parking brake cable brackets to the driver's side frame rail. It may be necessary to remove the driver's side cable from the rear most bracket to allow for enough slack. Torque bracket bolts to 20 ft-lbs.
108. Install the wheels. Torque lug nuts to 140 ft-lbs. Lower the vehicle to the ground.
109. Bounce the rear of the vehicle to settle the suspension.
110. Torque the u-bolts to 90-100 ft-lbs.
111. Check all rear hardware for proper torque.

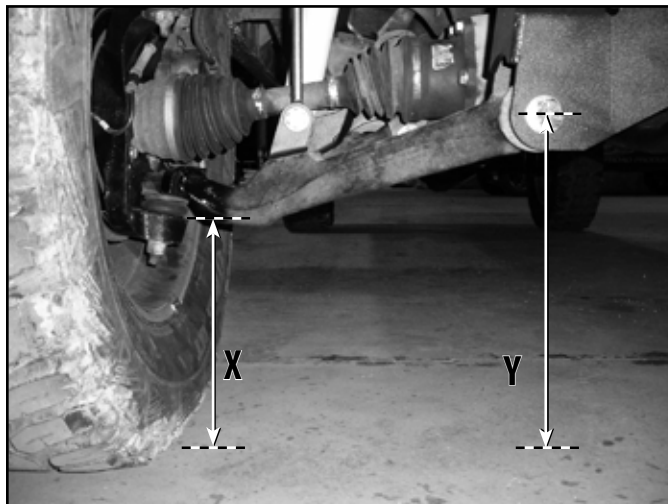
## POST-INSTALLATION

112. Check all hardware for proper torque.
113. Reconnect the positive and negative battery cables.

## SET FRONT SUSPENSION HEIGHT

114. It is very common for the particular vehicle model to have widely varying starting suspension heights. In order to give a more precise suspension height setting we have provided a Z-height reference. Refer to Figure 48.

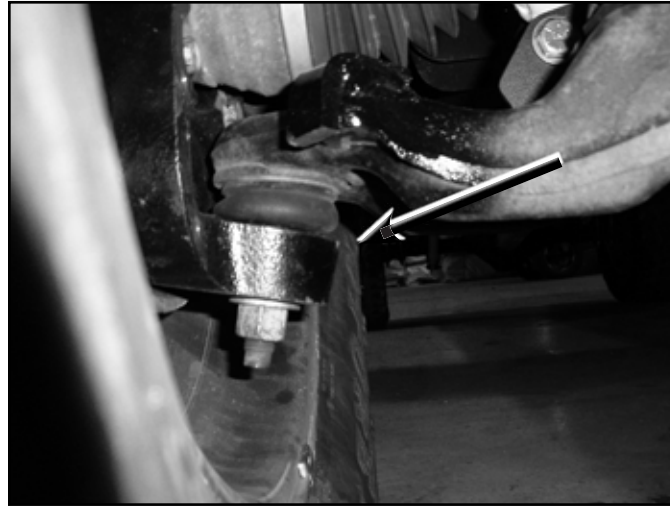
**FIGURE 48**



115. Roll the vehicle forward and back to settle the front suspension. With the vehicle on flat, level ground measure the distance from the floor to the center of the front lower control arm bolt. This is distance 'Y'. Record here: \_\_\_\_\_

116. Measure from the floor up to the top, inner lip of the lower ball joint mount on the new steering knuckle (Fig 49). This is distance 'X'. Record here: \_\_\_\_\_

**FIGURE 49**



117. To determine the Z-height use the following equation:  $Y-X=Z$ . For the intended 4.5" of lift the value for Z should be approximately 2". If your value for 'Z' is less than 2" the torsion bars need to be adjusted up (tightened). If your value for 'Z' is more than 2" the torsion bars need to be adjusted down (loosened). These values are for reference but should not vary more than 1" in either direction.

## **FINAL CHECK**

118. The vehicle will need a complete front end alignment.

119. Check all hardware after 500 miles.

120. Adjust headlights.



## **WE WANT TO SEE YOUR RIDE!**

Grab photos of your BDS-equipped truck in action and send them in for a chance to be featured. Send it in to our Bad Ass Rides customer gallery at [bds-suspension.com/bar](http://bds-suspension.com/bar) and post them on the BDS Fan Page on Facebook at [facebook.com/BDSSuspensions](https://facebook.com/BDSSuspensions). Don't forget about your BDS swag! BDS offers t-shirts, hoodies, decals and more available on the BDS website or through your local BDS distributor.

---

## **TIME TO HAVE SOME FUN**

**Thank you for choosing BDS Suspension.**

For questions, technical support and warranty issues relating to this BDS Suspension product, please contact your distributor/installer before contacting BDS Suspension directly.