



#C1352-C1353 Installation Instructions

2003-2005 Chevy/GM 1500 4wd

2006-2007CL Chevy/GM 1500 4wd

3.5" Combo Lift Kit

Read and understand all instructions and warnings prior to installation of product and operation of vehicle.

1. Zone Offroad Products recommends this system be installed by a professional technician. In addition to these instructions, professional knowledge of disassembly/ reassembly procedures and post installation checks must be known. Minimum tool requirements include the following: Assorted metric and standard wrenches, hammer, hydraulic floor jack and a set of jack stands. See the "Special Tools Required" section for additional tools needed to complete this installation properly and safely.

»» PRODUCT SAFETY WARNING

2. Certain Zone Suspension Products are intended to improve off-road performance. Modifying your vehicle for off-road use may result in the vehicle handling differently than a factory equipped vehicle. Extreme care must be used to prevent loss of control or vehicle rollover. Failure to drive your modified vehicle safely may result in serious injury or death. Zone Offroad Products does not recommend the combined use of suspension lifts, body lifts, or other lifting devices.
3. You should never operate your modified vehicle under the influence of alcohol or drugs. Always drive your modified vehicle at reduced speeds to ensure your ability to control your vehicle under all driving conditions. Always wear your seat belt.

»» TECHNICAL SUPPORT

4. *Live Chat* provides instant communication with Zone tech support. Anyone can access live chat through a link on www.zoneoffroad.com.
5. www.zoneoffroad.com may have additional information about this product including the latest instructions, videos, photos, etc.
6. Send an e-mail to tech@zoneoffroad.com detailing your issue for a quick response.
7. **888.998.ZONE** Call to speak directly with Zone tech support.

»» PRE-INSTALLATION NOTES

8. Special literature required: OE Service Manual for model/year of vehicle. Refer to manual for proper disassembly/reassembly procedures of OE and related components.
9. Adhere to recommendations when replacement fasteners, retainers and keepers are called out in the OE manual.
10. Larger rim and tire combinations may increase leverage on suspension, steering, and related components. When selecting combinations larger than OE, consider the additional stress you could be inducing on the OE and related components.
11. Post suspension system vehicles may experience drive line vibrations. Angles may require tuning, slider on shaft may require replacement, shafts may need to be lengthened or trued, and U-joints may need to be replaced.
12. Secure and properly block vehicle prior to installation of Zone Offroad Products. Always wear safety glasses when using power tools.
13. If installation is to be performed without a hoist, Zone Offroad Products recommends rear alterations first.
14. Due to payload options and initial ride height variances, the amount of lift is a base figure. Final ride height dimensions may vary in accordance to original vehicle attitude. Always measure the attitude prior to beginning installation.

Difficulty Level

easy 1 2 **3** 4 5 difficult

Estimated installation: 4-5 hours

Special Tools Required

Cut-off tool or equivalent

Torsion bar unloading tool J36202 or equivalent

Tire/Wheel Fitment

33x12.50 tire

Stock wheel backspacing

***Important* Verify you have all of the kit components before beginning installation.**

Kit Contents

Qty	Part	Qty	Part
1	Bolt Pack - Body Mount - #270 (06-07 models only)	1	Bolt Pack - Front Bumper, etc - #272
6	14mm-2.00 x 140mm bolt	4	7/16"-14 x 1-1/4" bolt grade 5
2	12mm-1.75 x 140mm bolt	4	7/16"-14 prevailing torque nut
2	12mm-1.75 prevailing torque nut	12	3/8" USS flat washer
10	7/16" USS washer	2	1/2"-13 x 1-1/4" bolt grade 5
8	12mm-1.75 x 70mm bolt	2	1/2"-13 prevailing torque nut
4	5/16"-18 x 3/4" self-tapping bolt	6	1/2" SAE flat washer
2	1-3/4" OD 1/2" ID 3/16" Thk washer	2	12mm-1.75 x 70mm bolt class 8.8
1	1/4"-20 nylock nut	4	10mm-1.5 prevailing torque nut
1	1/4" SAE Washer	2	1/4" USS flat washer
1	Bolt Pack - Body Mount - #273 (03-05 models only)	2	1/4"-20 x 3/4" self-tapping bolt
8	12mm-1.75 x 140mm bolt	2	Torsion Bar Keys
2	12mm-1.75 prevailing torque nut	16	3" Dia x 1.5" Tall Body Block
10	7/16" USS washer	2	2" Dia x 1.5" Tall Bumper Spacer
8	12mm-1.75 x 70mm bolt	2	2" Dia x 1.25" GM Bumper Spacer
4	5/16"-18 x 3/4" self-tapping bolt	2	Chevy Front Bumper Bracket
2	1-3/4" OD 1/2" ID 3/16" Thk washer	4	1.5" Steel Bed Spacer
1	Bolt Pack 758 - GM Front Bumper	2	Upper Fan Shroud Bracket
2	12mm-1.75 x 60mm bolt	2	Lower Fan Shroud Bracket
2	12mm-1.75 prevailing torque nut		
4	1/2" SAE washer		



PRE-INSTALLATION INSTRUCTIONS

1. Zone Offroad recommends completing the 2" Torsion Bar Key lift first, as outlined in these instructions.
2. An optional rear bumper bracket kits is available (Zone #C9908). If installing the bumper bracket kit, do so after the body lift portion of the installation is complete.
3. Optional front shocks are available (Zone #4612). These can be installed during or after the 2" Torsion Bar Key installation.

2" TORSION BAR KEYS - INSTALLATION INSTRUCTIONS

1. Park vehicle on clean, flat, and level surface. Block the rear wheels for safety.
2. Measure the ride height of the vehicle and record.
3. Raise the front of the vehicle with a hydraulic jack. Support the frame rails with jackstands.
4. Measure the length of the torsion bar adjuster bolts (top of the adjuster bolt head to adjuster)
5. Remove the adjuster bolts, keep driver's and pass side bolts separate.
6. Use the torsion bar removal tool to remove the threaded adjuster assembly. Release the pressure from torsion bar with the unloading tool. **Caution: There is an extreme amount of energy stored in the torsion bars. Use extreme care with the proper tools to avoid serious injury or death.**
7. Slide the torsion bars forward to allow the keys to be removed. It may be necessary to use an air hammer to get the bars to break free.
8. Apply a small amount of grease to the hex on each end of the torsion bar. Install the new torsion keys.
9. If replacing the factory shocks remove them and save the lower hardware. Install new shocks according to the instructions in the shock box.
10. Install the torsion bar adjuster assembly with torsion bar tool.
11. Set the overall length of the exposed thread and bolt head to the original measurement. The minimum recommended length is 3/4". This may need to be adjusted if heavy accessories are added to the front of the vehicle.
12. Lower the front end to the ground, bounce the front end to settle the suspension.
13. Tighten the lower shock hardware to 95 ft-lbs.
14. Check the final ride height measurement. This should not be more than 23-1/2" (25" if measuring after the body lift is installed). If it is greater than this, the adjusters need to be lowered.
15. A front end alignment must now be performed.

Important—measure before starting!

Measure from the center of the wheel up to the bottom edge of the wheel opening

LF _____ RF _____

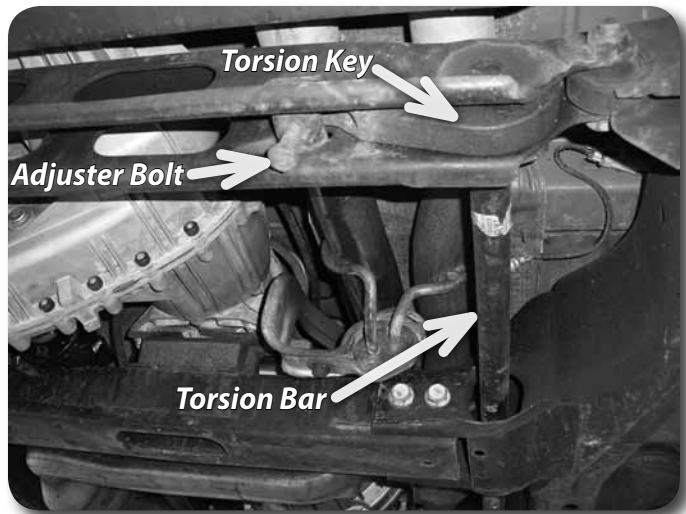
LR _____ RR _____

Important—measure before starting!

Measure the exposed length of the torsion bar adjusters before starting.

DRV _____ PASS _____

Caution: There is an extreme amount of energy stored in the torsion bars. Use care with the proper tools to avoid serious injury.



1.5" BODY LIFT - INSTALLATION INSTRUCTIONS

1. Remove negative battery cable, then positive battery cable from the battery. If equipped, the Supplemental Restraint System (airbags) will be deactivated when the battery is disconnected.

» FRONT/UNDER HOOD

2. Remove the 7 plastic clips that mount the upper plastic core support cover to the core support **Figure 1**. Pull up on the center of the clip with a flat blade screw driver and then pull the clip out of the hole. Remove the cover from the vehicle. Save clips and cover.

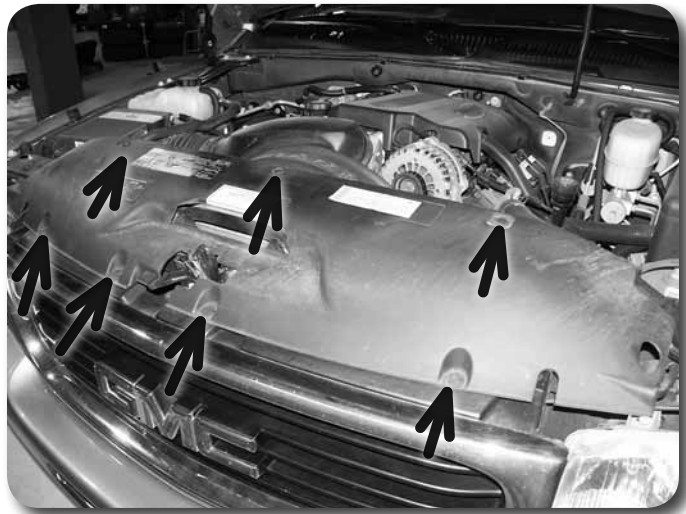


Figure 1

3. Remove the grill. Four Phillips head fasteners are located at the four corners of the grill face that require a quarter turn to release **Figure 2**. Remove the bolt at the top-center of the grill. Remove the grill from the vehicle by carefully pulling out the middle outside edges that are clipped in place.

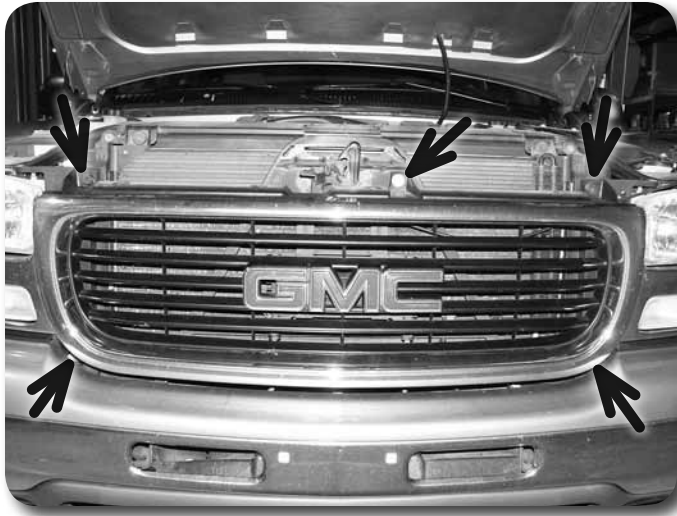


Figure 2

4. Remove the 4 bolts mounting the transmission cooler to the core support Figure 3. Pull the cooler forward, free from the core support mount. Save bolts.

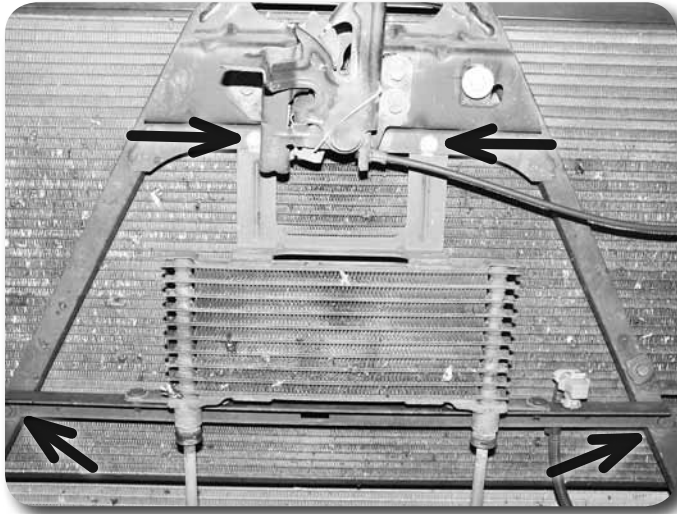


Figure 3

5. Remove the transmission cooler lines from the clips on the core support Figure 4.



Figure 4

Step 4 Note

In some earlier models the bottom clips were replaced with standard bolts.

Not all models were equipped with transmission coolers.

6. Remove the air intake tube from the throttle body and the air filter box by loosening the hose clamps at each point. If equipped, remove the radiator hose clip that is attached to the middle of the air intake tube. Remove the intake tube from the vehicle.
7. Remove the bolts (2 or 4, depending on vehicle) mounting the top of the fan shroud to the core support **Figure 5**. Save bolts.
8. Pull up on the fan shroud to remove it from the bottom retaining clips. On some models, oil lines must be removed from retaining clips on the driver's side of the lower fan shroud.
9. Disconnect the ground strap from the driver's side firewall **Figure 6**. Save nut.



Figure 5

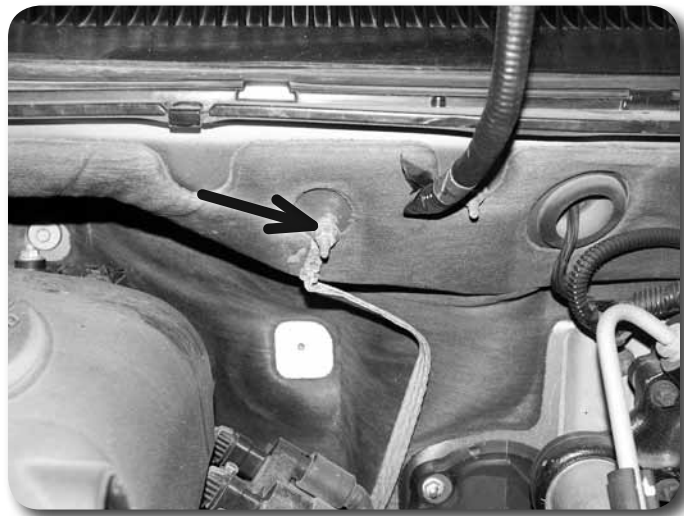


Figure 6

10. Lock the steering wheel. Locate the bolt that connects the upper steering column to the lower steering shaft **Figure 7**. Make a mark on each half for alignment during installation. Remove the bolt and separate the shafts by sliding the steering column up off the lower shaft. Save mounting hardware.

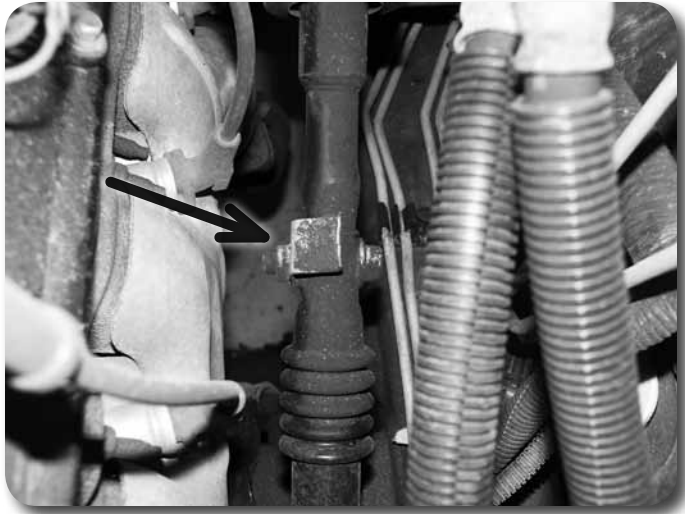


Figure 7

» FRONT BUMPER

11. If equipped, disconnect the fog light wires from the light housings mounted in the front bumper Figure 8.
12. Remove the bolt (on each side) mounting the outside bumper support to the bumper. Remove the bolts mounting the support to the frame and remove the bumper Figure 8. Save the supports and hardware.

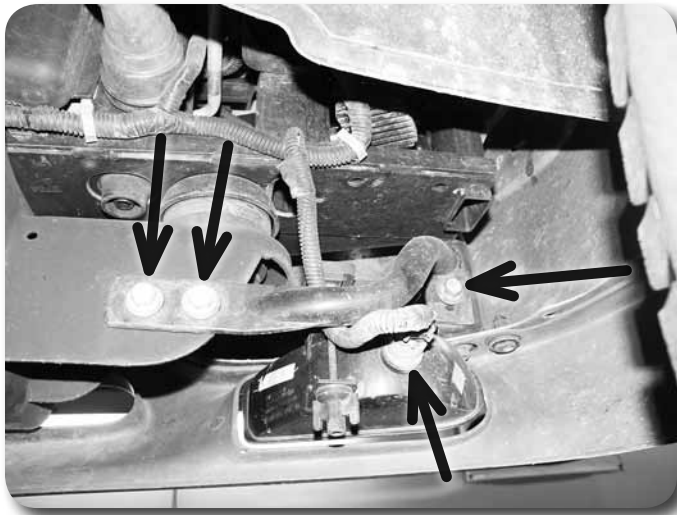


Figure 8

13. Since the grill was removed, the four inside bumper bolts (two on each side) can be accessed from above the bumper Figure 9. While supporting the bumper, remove the four bolts and separate the bumper from the vehicle. Save bumper mounting bolts.

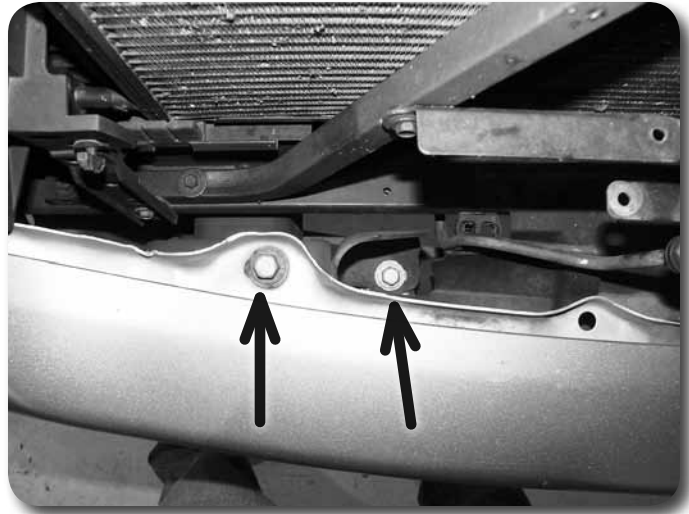


Figure 9

14. Locate the wire loom running along the bottom of the core support **Figure 10**. Remove the wire loom from the retain clips (approximately 4 total) and remove the clips from the core support. The clips will not be reused. Be sure that the lower portion of the fan shroud lip is clear from the bottom edge of the core support so it is able to drop while the body is lifted. If the vehicle is equipped with a front skid plate, removing the skid plate will aid in accessing the clips.

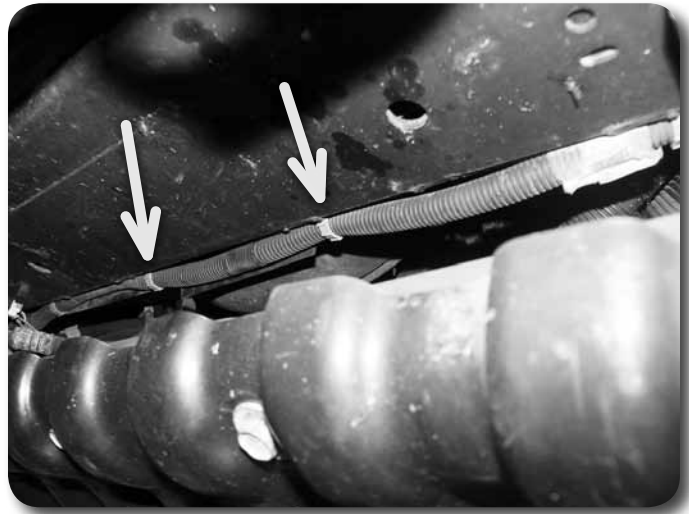


Figure 10

15. Locate the brake lines on the driver's side frame rail at the front driver's side wheel well. Remove the brake lines from the retaining clip **Figure 11**. Check for any other lines, hoses or wires in this area that may not have enough slack to compensate for 1.5" of lift. Mark these lines, hoses or wires and disconnect.



Figure 11

» PARKING BRAKE CABLE

16. Pull down on the parking brake cable that runs down the driver's side frame rail. Clamp the cable where it runs through the front body mount so it stays slack Figure 12.

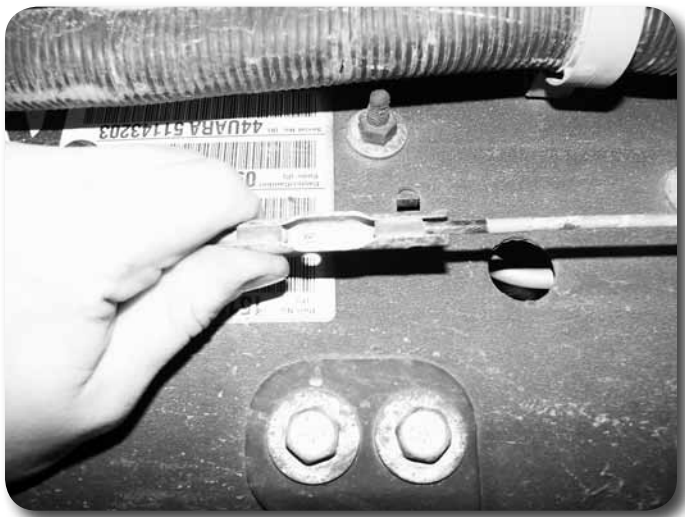


Figure 12

17. Disconnect the front section of the cable from the rear section at the connector just below the driver's side door. There is a small indent in the connector that must be removed to allow the cable to be pulled free Figure 13. Remove the indent with a punch, small rotary grinder or drill.



Figure 13

18. Compress the retaining clip at the body mount **Figure 14** and pull the parking brake cable out the front of the body mount.



Figure 14

» CAB LIFT

19. Check for any other wires, hoses, cables, etc that may not have enough slack for 1.5" of body lift. Disconnect or reroute these parts as necessary.
20. Loosen but do not remove all cab mount bolts. All mounting bolts thread up into the cab except the two front bolts which are mounted downward. The front bolts are accessed through a hole in the body.
21. Remove the passenger's side body bolts. Place a hydraulic jack (with wooden block) under the passenger's side so that the weight is evenly distributed on the jack. Slowly raise body, checking for any wires or hoses that may be binding or stretching. Lift the body just high enough to install the large 3" diameter body spacers.
22. For 03-05 models, use 12mm x 140mm bolts in all the body mounts in combination with the factory body bushing assemblies. The front mount uses the thick 1-3/4" diameter washers on the bolt that is installed from the top through the access hole in the body. Fasten the front bolts with a 7/16" USS washer and 12mm nut along with the factory bushing assemblies. For 06-07 models, use the same 12mm hardware for the front mount and the provided 14mm x 140mm

Step 22 Note

All body mount hardware is located in hardware pack #273 for 03-05 models and #270 for 06-07 models.

bolts in the remaining 6 body mounts. Do not tighten body mount bolts at this time.

23. Repeat lift procedure for other side of vehicle.
24. Inspect the body to see that it is properly aligned on the frame and the bed. Remove each body bolt one at a time and apply Loctite to the threads. Torque all 12mm body mount bolts to 65 ft-lbs and 14mm body mount bolts to 90 ft-lbs.

»» BED LIFT

25. Loosen but do not remove all bed mounting bolts (six on short bed, eight on long).
26. Remove the bolts from one side of the bed. Using a hydraulic jack and a block of wood, lift the bed just high enough to install the body spacers. Install 12mm x 70mm bolts and 7/16" washers in the body spacers but do not tighten.
27. Repeat the lifting procedure for the other side of the vehicle. Align the bed to the cab and tighten all mounting hardware. Use Loctite® on all mounting hardware.
28. Remove the rubber pads from the frame where the bed's cross members originally rested (four locations on long beds, two on short beds). Place the metal body spacers at these locations. **Figure 15** Attach the spacers to the frame with 5/16" x 3/4" self-tapping bolts. Tighten hardware to 10 ft-lbs.

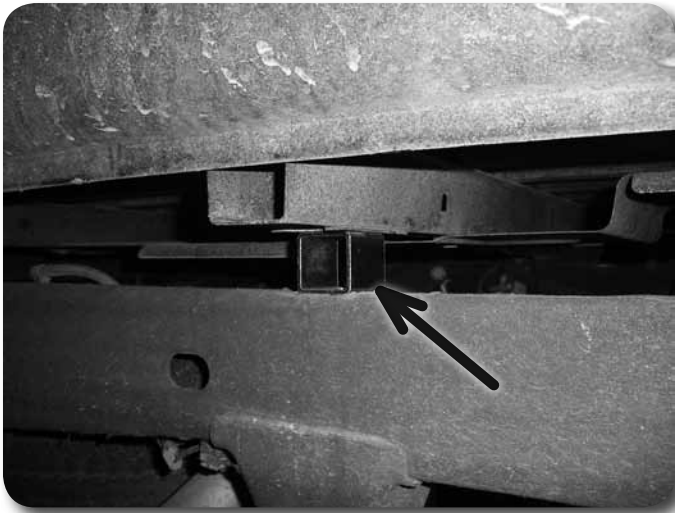


Figure 15

»» FRONT/UNDER HOOD

29. Reconnect the upper and lower steering shaft halves. Align the mark made during disassembly. Fasten with the factory bolt and torque hardware to 40 ft-lbs.
30. Reattach the ground wire to the stud on the firewall. Fasten with the original nut and torque to 10 ft-lbs.
31. Install the new 1.25" fan shroud relocation brackets (w/1/4" studs) to the original shroud mounting holes using the stock bolts **Figure 16**. Install the brackets so the studs point toward the engine compartment. Torque hardware to 10 ft-lbs.

Step 24 Note

If the vehicle is equipped with aftermarket step bars that mount off of the body mounts, longer mounting bolts may be required in those locations.

Step 26 Note

All bed mounting hardware is located in hardware pack #273 for 03-05 models and #270 for 06-07 models..

Step 28 Note

5/16" bed spacer hardware is located in hardware pack #270 or #273. It may be helpful to use the bolts to tap the holes before installing the spacer.

Step 31 Note

If your vehicle is equipped with electric fans skip steps 31-37



Figure 16

Step 32,35 Note

Upper and lower fan shroud hardware is located in hardware pack #272

32. Mount the fan shroud on the relocation bracket studs and fasten with the provided 1/4" nuts and washers. Torque to 5 ft-lbs.
33. Working from the bottom of the fan shroud, pull the wire loom out away from the fan shroud. **Figure 17A** Locate the provided lower fan shroud brackets (2) and position them as shown. **Figure 17B** The lower horizontal shroud lip should rest just below the core support and the shroud pulled tight forward. Use the brackets to mark the position of the holes to be drilled.



Figure 17A



Figure 17B

34. Drill a 7/32" holes at each of the marks for the lower shroud brackets. **CAUTION: Take care to not drill more than 1/2" past the thickness of the core support material. The radiator is located just above.**
35. With the holes drilled, reposition the lower shroud brackets and fasten with the provided 1/4" x 3/4" self-tapping bolts. Tighten bolts to 10 ft-lbs. Figure 18

Step 34 Note

It may be helpful to remove the factory front plastic splash guard in order to get a better angle for drilling.



Figure 18

36. Use the provided zip ties to secure the wire loom to the two new lower shroud brackets.
37. Double check fan-to-shroud clearance.
38. Reattach the air intake tube to the throttle body and air filter box with the factory clamps. Tighten clamps securely. If equipped, reattach the radiator hose to the intake tube.
39. Reattach the transmission oil cooler to the original location on the core support with the factory bolts. Torque hardware to 10 ft-lbs.
40. Mount the cooler lines back in the plastic retaining clip at the bottom of the core support. Check that the cooler lines are not rubbing on anything. It may be necessary to slightly bend them to properly clear the core support and/or the fan shroud.
41. Reconnect any other lines, hoses, etc that were removed prior to lifting that were not outlined in the instructions.

» FRONT BUMPER - CHEVY MODELS

42. For GMC models skip to step 46. For Chevy models the factory front bumper brackets need to be modified. Locate the bottom mounting tab on the bumper bracket (mounted to the inside of the bumper). Remove the lower inside mounting bolt and nut tab. These will not be reused. **Figure 19**

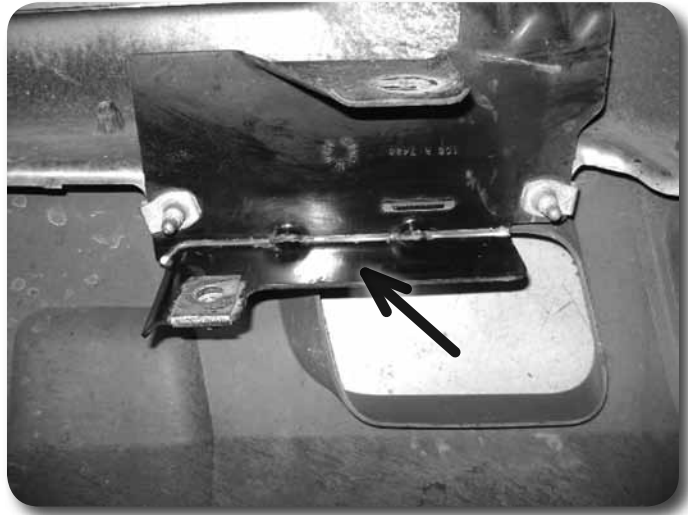


Figure 19

43. Trim the brackets off flush with the vertical bracket surface. Grind the cut edge flush with the vertical face so the new bracket will set flush. **Figure 20**

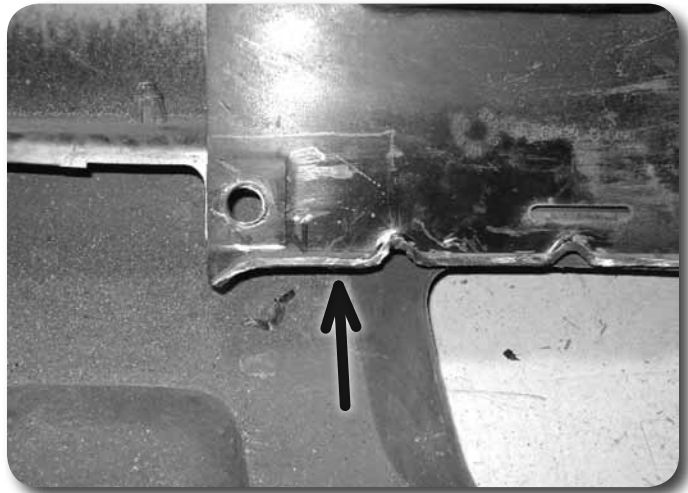


Figure 20

44. Locate a new front bumper bracket. Line the inner mounting hole of the new bracket with the lower inside factory hole where the bolt/nut tab was removed. Also, align the vertical edge of the new bracket with the vertical edge of the factory bracket. Mark the second bracket mounting hole to be drilled. **Figure 21**

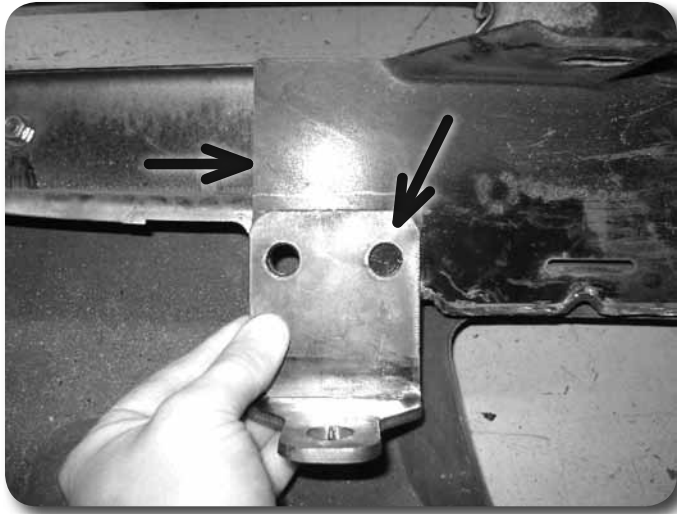


Figure 21

45. Drill a 7/16" hole at the marks made. Attach the new brackets to the bumper with the provided 7/16" x 1-1/4" bolts, nuts and washers. Mount so the bolt heads on the new bracket side as shown in Figure 22. Be sure the vertical edges of the new and original brackets are aligned and torque 7/16" hardware to 45 ft-lbs.

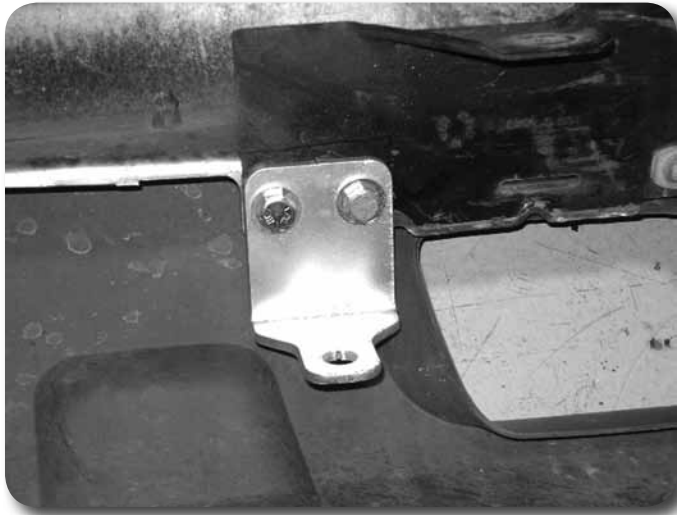


Figure 22

46. Locate the provided 2" diameter x 1-1/2" tall bumper spacers. Slide the bumper in place over the frame rails and place the spacers between the upper bumper mount tab and upper frame mount. Align the mounting holes in the bumper, frame and spacer. Loosely fasten with the provided 12mm x 70mm bolts and 1/2" washers. Figure 24A
47. Attach the new lower brackets to the original bumper mounts on the frame with the provided 1/2" x 1-1/4" bolts, nuts and washers. Figure 24B Leave hardware loose.

Step 46 Note

The new lower bumper brackets must be below the lower mount tabs on the frame. Hardware is located in bolt pack 272

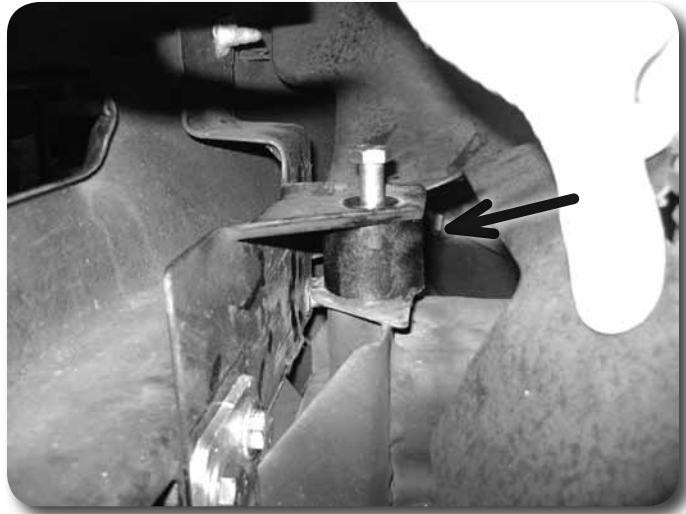


Figure 24A

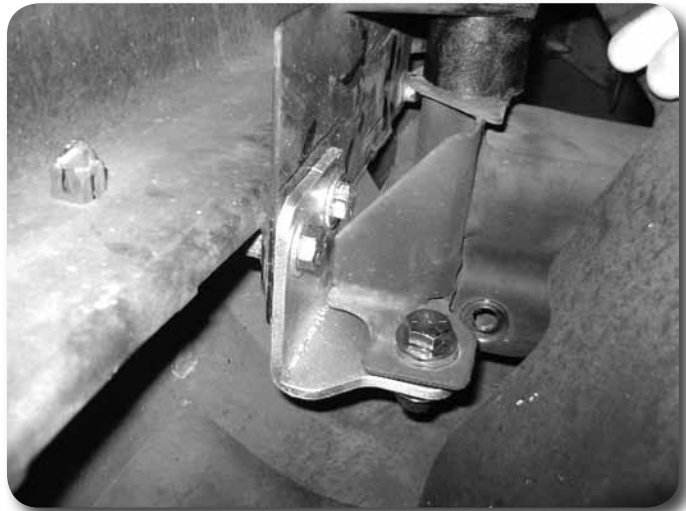


Figure 24B

» **FRONT BUMPER - GMC MODELS**

48. Remove the plastic tow hook valences, these will not be re-used Figure 25.



Figure 25

49. The factory front bumper brackets need to be modified. Remove these brackets from the bumper and Remove the lower nut tab. Save hardware.
50. Mark the extended edge of the lower mount to the vertical surface of the factory bumper bracket. Measure in 1/4" from the vertical surface and mark a cut line across the full bracket up to the projected edge of the lower mount **Figure 26A, 26B**. Cut the bracket at the marks and paint the exposed metal.



Figure 26A

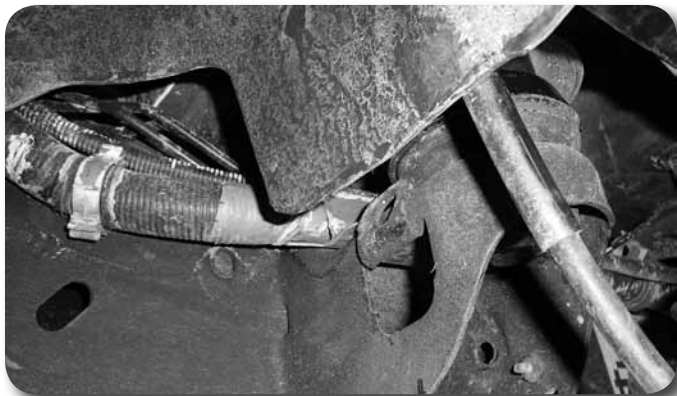


Figure 26B

51. The bumper valence opening above the tow hooks will also need to be trimmed to provide adequate clearance to the front frame horns. A hacksaw blade works well for rough cuts, but a razor blade is recommended for the finished edge. The amount of trimming will vary, see **Figure 27**.



Figure 27

Step 51 Note

The center valence accessory can be removed with 6 plastic retaining clips for more trimming clearance if necessary.

Step 52 Note

Make sure the tow hooks fit through the holes in the valence as the bumper is put into position. Hardware is located in bolt pack 272.

Step 53 Note

Hardware is located in bolt pack 758.

52. Locate the provided 2" diameter x 1-1/2" tall bumper spacers. Slide the bumper in place over the frame rails and place the spacers between the upper bumper mount tab and upper frame mount. Align the mounting holes in the bumper, frame and spacer. Loosely fasten with the provided 12mm x 70mm bolts and 1/2" washers.
53. Locate the provided 2" diameter x 1-1/4" tall bumper spacers and factory nut tabs for the lower mount. The nuts tabs can be re-used but need to be flipped since the bolts will not be going from the bottom up. If these are damaged new nuts and washers are provided. Slide the spacers between the lower frame and bumper mount. Due to some deflection in the factory bumper brackets, it may be necessary to slightly bend the lower mount up or lift the bumper to get the spacers in place. Loosely fasten with the provided 12mm x 60mm bolts and 1/2" washers **Figure 28**.



Figure 28

» FRONT BUMPER - ALL MODELS

54. Locate the original outside bumper support bracket mount holes on each front body mount. Measure straight up from the center of the holes 1-1/2" and mark. Drill 7/16" holes at the marks (4 total). **Figure 29** The brackets will be attached after the bumper is in place.

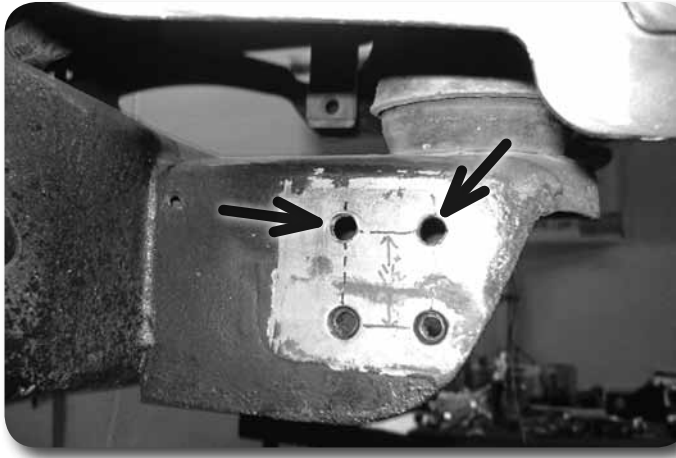


Figure 29

55. Loosely fasten the original outer support bracket to the new holes in the front body mounts with the factory bolts along with the 10mm nuts and 3/8" USS flat washers. **Figure 30** Also, attach the supports to the original location on the bumper with the factory hardware. Leave all hardware loose.



Figure 30

56. Check tow hook clearance to the front bumper valance. They should rest just above the bottom of the factory cut-out in the valance. Clearance varies between mount years. Additional valance trimming may be needed. **Figure 31**



Figure 31

57. Adjust the bumper to the proper location and torque all mounting hardware. Tighten the outer support bolts (6 total) to 45 ft-lbs and upper/lower main frame mount bolts to 60 ft-lbs.
58. If equipped, reconnect the fog lights in the front bumper.
59. Install the grill on the vehicle in the reverse of how it was removed.
60. Install the plastic core support cover on the top of the core support and fasten with the original plastic retaining clips.

» **PARKING BRAKE CABLE**

61. Locate the tab on the driver's side body mount where the parking brake cable runs through it. **Figure 26A** Bend the tab up flat against the mount to gain slack for the cable. **Figure 26B** Run the cable back through the mount into its original location. **Figure 26C**



Figure 26A



Figure 26B

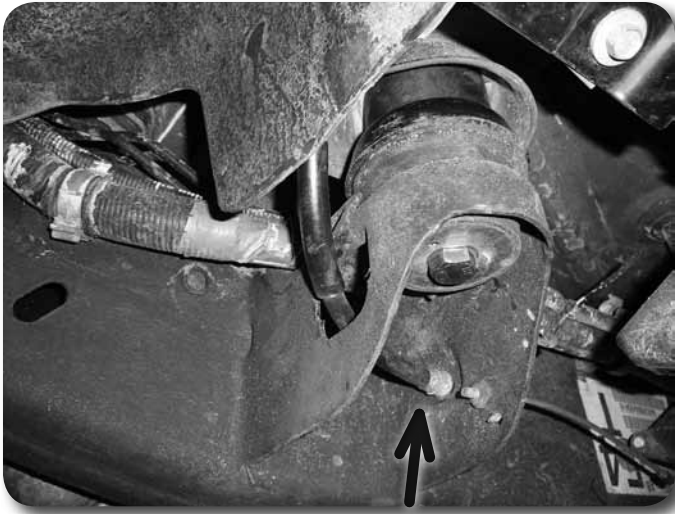


Figure 26C

62. Pull slack on the parking brake cable and clamp it off like it was during disassembly. Reconnect the front cable to the rear cable and remove the clamp.

» FUEL LINE - MANUAL SHIFT TRANSFER CASE ONLY

63. Check the fuel lines near the transfer case shift linkage. They are the on the driver's side of the transfer case. Be sure that the lines do not interfere with the shift operation through the full gear selection range. It may be necessary to bend the fuel lines slightly for proper clearance.

» POST-INSTALLATION

64. Reconnect battery.
65. Check all hardware for proper torque.
66. Check hardware after 500 miles.
67. Adjust headlights.

Post-Installation Warnings

1. Check all fasteners for proper torque. Check to ensure for adequate clearance between all rotating, mobile, fixed, and heated members. Verify clearance between exhaust and brake lines, fuel lines, fuel tank, floor boards and wiring harness. Check steering gear for clearance. Test and inspect brake system.
2. Perform steering sweep to ensure front brake hoses have adequate slack and do not contact any rotating, mobile or heated members. Inspect rear brake hoses at full extension for adequate slack. Failure to perform hose check/ replacement may result in component failure.
3. Perform head light check and adjustment.
4. Re-torque all fasteners after 500 miles. Always inspect fasteners and components during routine servicing.