

## INSTALLATION INSTRUCTIONS:

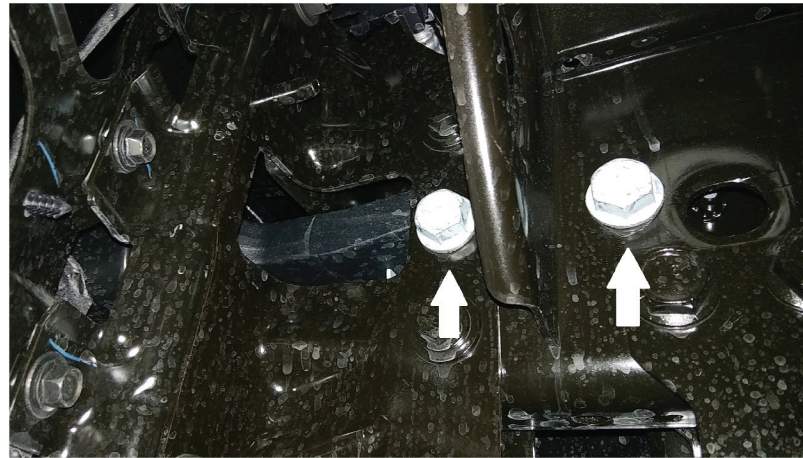
1. Begin by locating the fog light / sensor wiring harness. The wiring harness is located just above the driver side fog light.
2. Remove the factory tow hooks by taking off the two 24mm bolts.
3. Uninstall the factory bumper by removing the two 18mm bolts.
3. Remove the fog lights and mount them to the fog light brackets
4. Remove the sensors and wiring harness from the factory bumper and install them in the Legend Front Bumper replacement. Please remember to use the provided rubber grommets.
5. Mount the provided mounting plates to the outside of the frame. The angle iron will rest on top of the frame.
- 5a. *Note: The two holes where the factory bumper was mounted may have to be drilled out to 1/2".*
6. Use the 1/2" x 4" bolts in the top and bottom holes.
7. Reinstall the tow hooks using the factory bolts.
8. Install the Legend Front Bumper to the mounting plate using the 1/2" x 2" bolts.
9. Center and level the bumper then continue by completely tightening the bolts.
10. Mount the fog light bracket to the two 7/16" slotted holes located on the bottom of the mounting bracket. Level the fog light through the opening in the skirt and use the 3/8" bolts provided.
11. Plug in the fog light / sensor harness.
- 11a. *Note: We advise securing the wiring / sensor harness with a zip-tie.*

**ALWAYS MAKE SURE ALL NUTS AND BOLTS ARE TIGHT!**

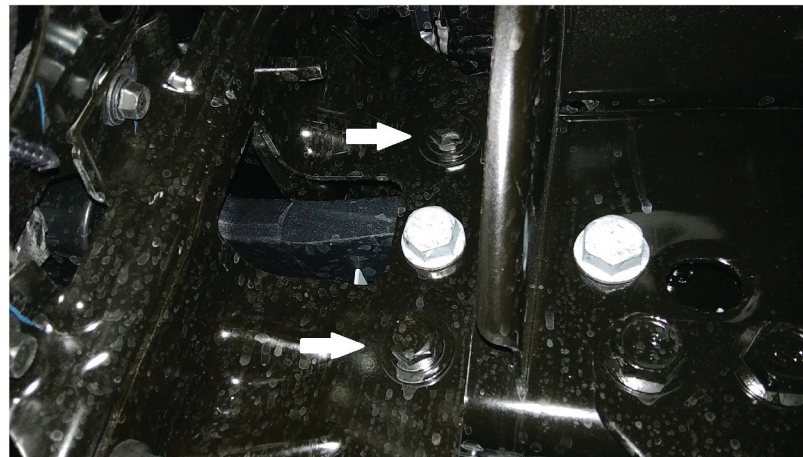
1



2



3



BFERD19HDR