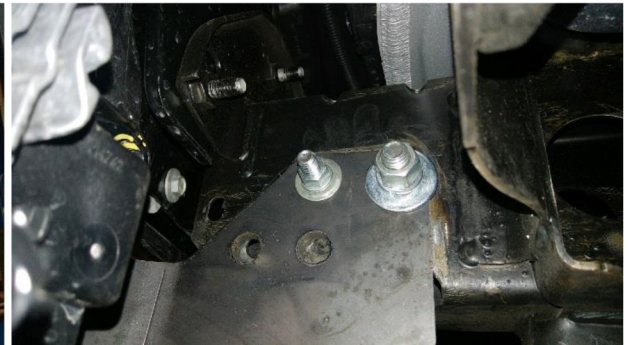




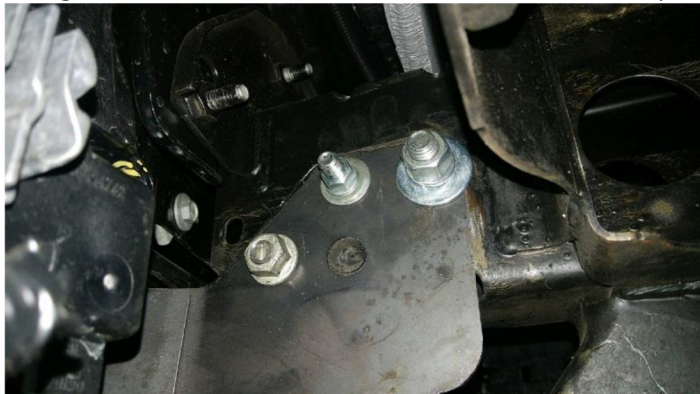
- Slide the 5" tab w/the bolts through the top holes of the frame.



- From the back side, slide the mounting bracket through the 2 1/2" x 3" opening and over the bolts. Use 3/8" and 1/2" washers, lock washers and nuts to install.



- Reinstall the tow hooks. Use the factory tow hooks. If there are no tow hooks present, use 1/2" bolts. Also, at this time tighten the 18mm bolt that was loosened in step 1.



- Repeat steps 2-6 on the passenger side.