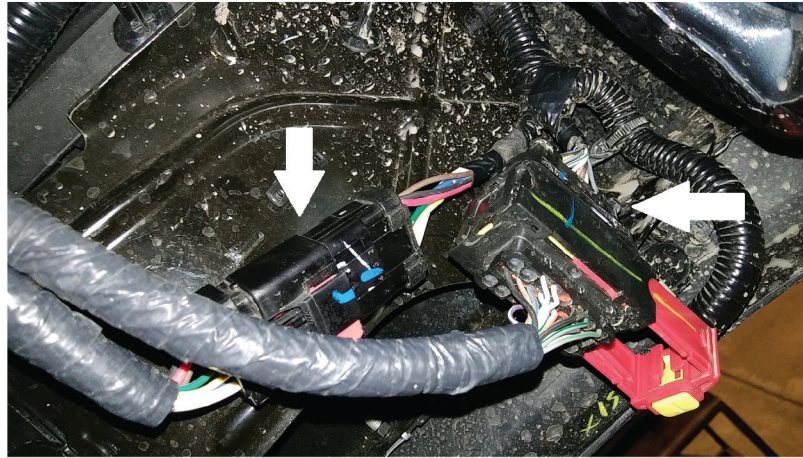


INSTALLATION INSTRUCTIONS:

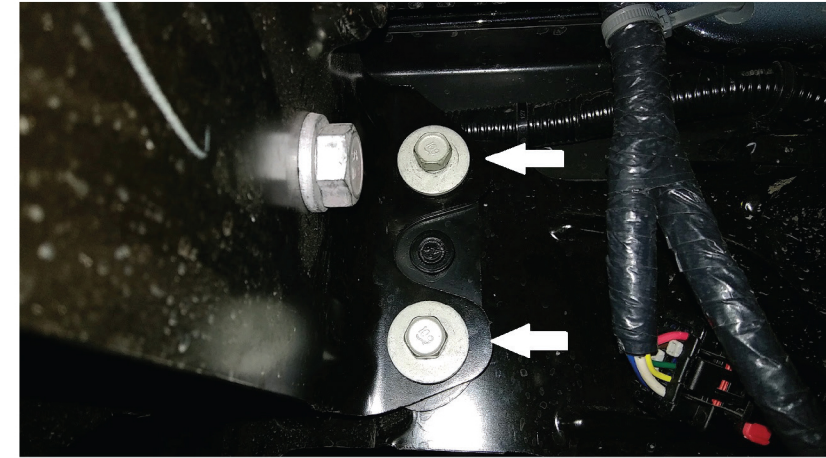
**NOTE: On dually models you will need to drill an extra 1" hole in the end cap for the side sensors.*

1. Begin by unplugging the connectors for the sensors, trailer plug, and license plate lights. They are located on the driver side of the bumper.
2. Remove the two 15mm bolts on each side that holds the factory bumper to the side bumper brackets.
3. Remove the two 15mm nuts that are located behind the license plate.
4. Remove the factory bumper.
5. Install the antenna module to the bracket supplied in the bolt package. Use the factory plastic clips to install. The bracket will then be mounted (using the two 15mm nuts) to the bracket on the factory receiver hitch.
6. Reinstall the license plate first and then the license plate lights. Wire them into the factory license plate light harness.
8. Install the rubber grommets into the holes in the skirt for the sensors. We recommend using a little WD-40 in the grommet to help with install of sensors.
9. Install the Ranch Hand Bumper by using the 1/2" hardware provided.
10. Center the bumper from side to side and finish tightening the bolts.
11. Install the reverse lights. Tie into the trailer plug wiring harness.

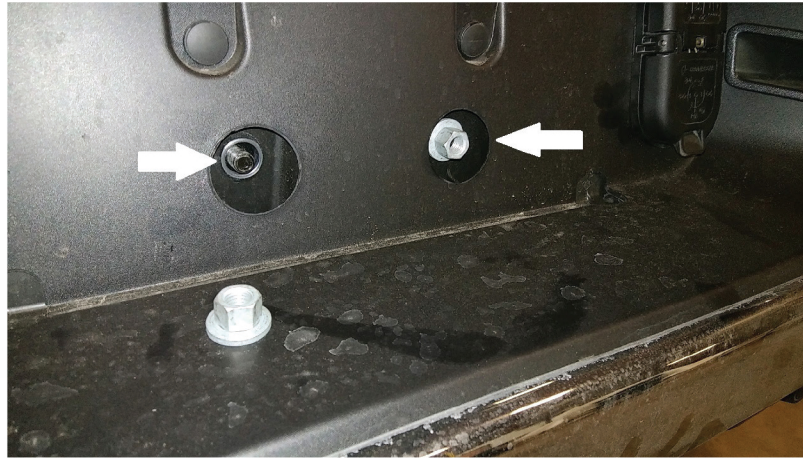
1



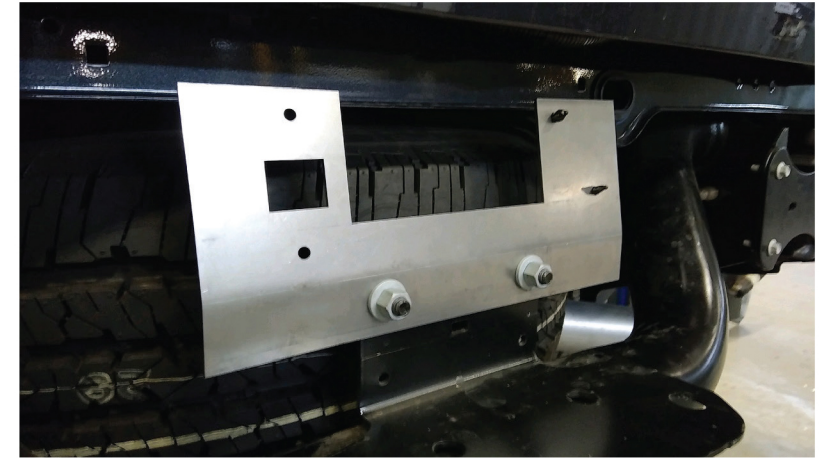
2



3



5



BRBSD19HDL

