



1.877.287.8634

INSTALLATION INSTRUCTIONS

IMPORTANT NOTICE: Be sure to inspect and test fit product before having it coated or painted. Ranch Hand will not be responsible for the cost of the coating if any problems with fit or finish are not noted and addressed beforehand.

**2021-up CHEVY TAHOE & SUBURBAN GRILL GUARD
PART # GGC21SBL1 & GGC21SBL1C**

***** FOR VEHICLES WITH ADAPTIVE CRUISE, YOU WILL NEED TO REMOVE THE FRONT FASCIA IN ORDER TO REMOVE MODULE AND MOUNT RELOCATION BRACKET *****

***** IF SENSORS DO NOT WORK WITH GRILL GUARD, YOU WILL NEED TO ORDER & USE PSC19HBL1 *****

***** Z71 MODELS MAY REQUIRE TRIMMING AROUND TOW HOOK AREA FOR CLEARANCE *****

1. Remove the driver and passenger Front Tire Air Deflectors. There will be (6) screws on each side.



2. Remove the Front Bumper Fascia Deflector. There will be (6) screws on the bottom side and (8) screws on the upper side.



----- **WARNING** -----

Special care should be exercised in the handling, storage and installation of Ranch Hand equipment. The actual weight of each piece of equipment will vary depending on style and model. The weight of the equipment is sufficient in volume to warrant special care, assistance and in some instances, the use of mechanical equipment during the transfer and installation of the equipment. Do not assume a position directly under the equipment during installation. Be sure the equipment has been connected and stabilized during installation to prevent falling or shifting of positions. Periodically check tightness of bolts to make sure they are tight, and unlikely to fail.
Rev. 2022



1.877.287.8634

INSTALLATION INSTRUCTIONS

IMPORTANT NOTICE: Be sure to inspect and test fit product before having it coated or painted. Ranch Hand will not be responsible for the cost of the coating if any problems with fit or finish are not noted and addressed beforehand.

3. On the driver side, pop out the Tow Hook Cover.



4. Use the Driver Tow Hook Cover as a template to cut the passenger side. Center and mark area to cut.



5. There is a driver and passenger side mounting bracket. Mount the brackets to the outer side of the frames. Use 7/16" hardware for the front hole and 3/8" bolt tab and hardware for the back hole. *(Photo shown without lock washers)*



----- **WARNING** -----

Special care should be exercised in the handling, storage and installation of Ranch Hand equipment. The actual weight of each piece of equipment will vary depending on style and model. The weight of the equipment is sufficient in volume to warrant special care, assistance and in some instances, the use of mechanical equipment during the transfer and installation of the equipment. Do not assume a position directly under the equipment during installation. Be sure the equipment has been connected and stabilized during installation to prevent falling or shifting of positions. Periodically check tightness of bolts to make sure they are tight, and unlikely to fail.
Rev. 2022

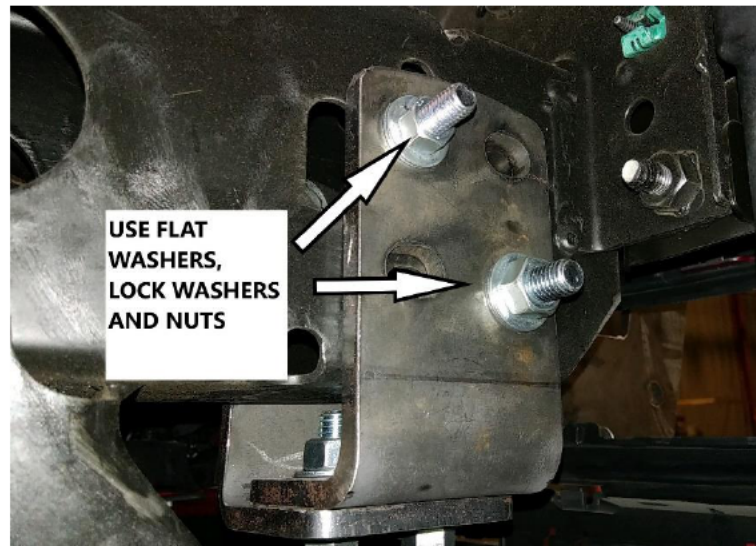


1.877.287.8634

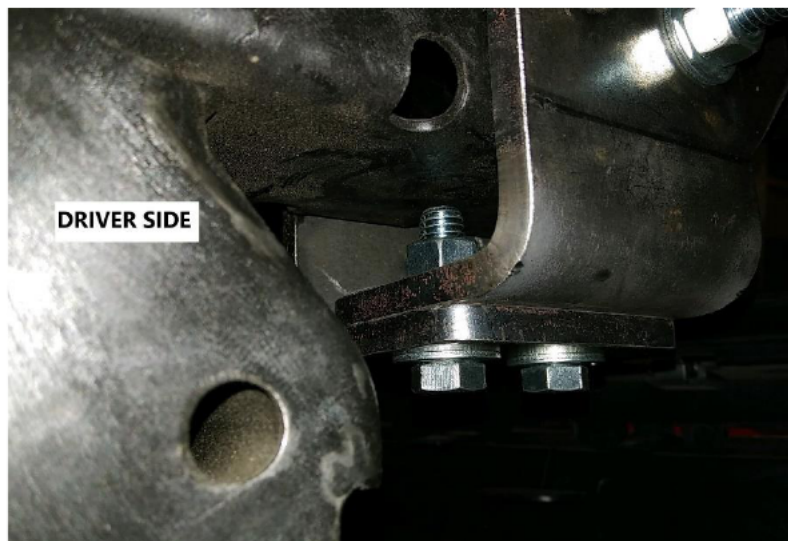
INSTALLATION INSTRUCTIONS

IMPORTANT NOTICE: Be sure to inspect and test fit product before having it coated or painted. Ranch Hand will not be responsible for the cost of the coating if any problems with fit or finish are not noted and addressed beforehand.

6. Center the brackets through the bumper opening and tighten bolts.
7. Mount the secondary brackets to the inner side of the frame rails. The leg of the secondary bracket will sit on top of the mounting bracket leg. Use 7/16" hardware for the front hole and 3/8" bolt tab and hardware for the back hole. *(Photo shown without lock washers)*



8. Mount the secondary bracket to the mounting bracket using 7/16" hardware.



9. Mount the grill guard to the outside of the mounting brackets. Use black carriage bolt and 1/2" hardware to install. Level grill guard and tight all bolts.
10. Reinstall Front Bumper Fascia Air Deflector and Front Tire Air Deflector.

----- WARNING -----

Special care should be exercised in the handling, storage and installation of Ranch Hand equipment. The actual weight of each piece of equipment will vary depending on style and model. The weight of the equipment is sufficient in volume to warrant special care, assistance and in some instances, the use of mechanical equipment during the transfer and installation of the equipment. Do not assume a position directly under the equipment during installation. Be sure the equipment has been connected and stabilized during installation to prevent falling or shifting of positions. Periodically check tightness of bolts to make sure they are tight, and unlikely to fail.
Rev. 2022



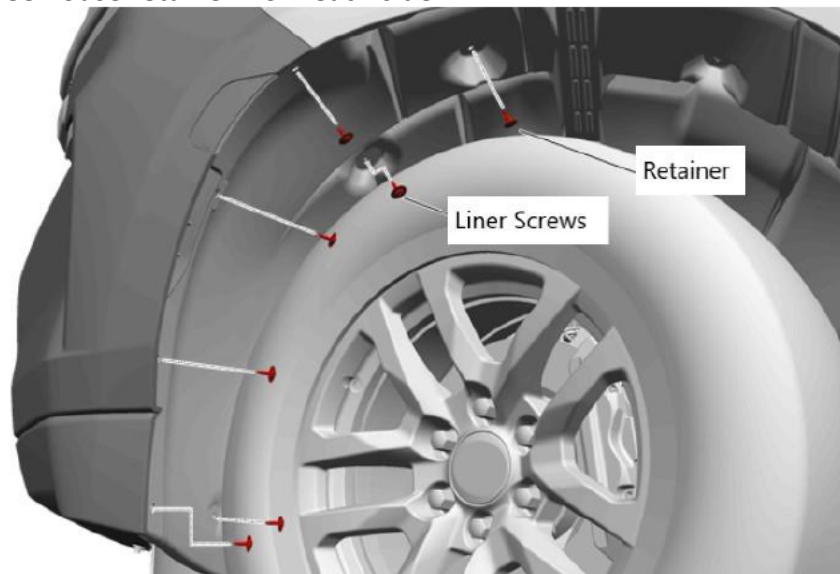
1.877.287.8634

INSTALLATION INSTRUCTIONS

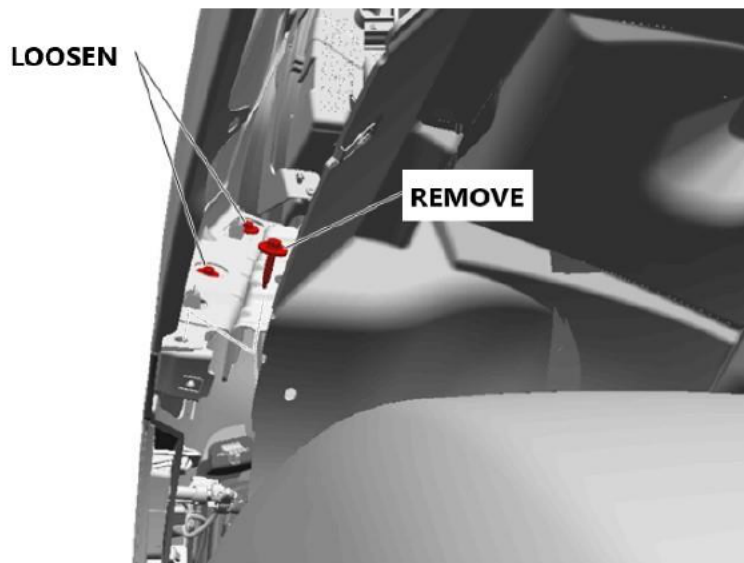
IMPORTANT NOTICE: Be sure to inspect and test fit product before having it coated or painted. Ranch Hand will not be responsible for the cost of the coating if any problems with fit or finish are not noted and addressed beforehand.

FOR INSTALLATION OF GRILL GUARD WITH ADAPTIVE CRUISE:

11. Follow steps 1-4.
12. Remove the (6) front wheelhouse liner torx screws from each side.
13. Remove the (1) wheelhouse retainer from each side.



14. Pull back the wheelhouse liner. There will (3) front bumper fascia guide screws, loosen the top two bolts and remove the lower screw.



15. Located behind the passenger side wheelhouse liner, disconnect the electrical connector.
16. Remove the side front fascia support brace bolt.

----- WARNING -----

Special care should be exercised in the handling, storage and installation of Ranch Hand equipment. The actual weight of each piece of equipment will vary depending on style and model. The weight of the equipment is sufficient in volume to warrant special care, assistance and in some instances, the use of mechanical equipment during the transfer and installation of the equipment. Do not assume a position directly under the equipment during installation. Be sure the equipment has been connected and stabilized during installation to prevent falling or shifting of positions. Periodically check tightness of bolts to make sure they are tight, and unlikely to fail.
Rev. 2022



1.877.287.8634

INSTALLATION INSTRUCTIONS

IMPORTANT NOTICE: Be sure to inspect and test fit product before having it coated or painted. Ranch Hand will not be responsible for the cost of the coating if any problems with fit or finish are not noted and addressed beforehand.

17. Open the hood and remove the hood release latch by removing two T15 screws.



18. Remove the ten plastic clips holding the Air Inlet Grille Panel.



19. Remove the (6) 10mm Front Grille Bolts.

20. Carefully push a small nylon wedge between the front bumper fascia and the front bumper fascia guide. Slide a flat plastic trim tool into the fascia slot and push the snaps (one at a time) and pull on the fascia at the same time to gradually remove the fascia.

21. Starting at the outside of the headlamp, release the front bumper fascia from the headlamp.

22. You will need an assistant to help remove fascia.

23. Remove the Adaptive Cruise bracket and Module.

----- **WARNING** -----

Special care should be exercised in the handling, storage and installation of Ranch Hand equipment.

The actual weight of each piece of equipment will vary depending on style and model. The weight of the equipment is sufficient in volume to warrant special care, assistance and in some instances, the use of mechanical equipment during the transfer and installation of the equipment.

Do not assume a position directly under the equipment during installation. Be sure the equipment has been connected and stabilized during installation to prevent falling or shifting of positions.

Periodically check tightness of bolts to make sure they are tight, and unlikely to fail.

Rev. 2022

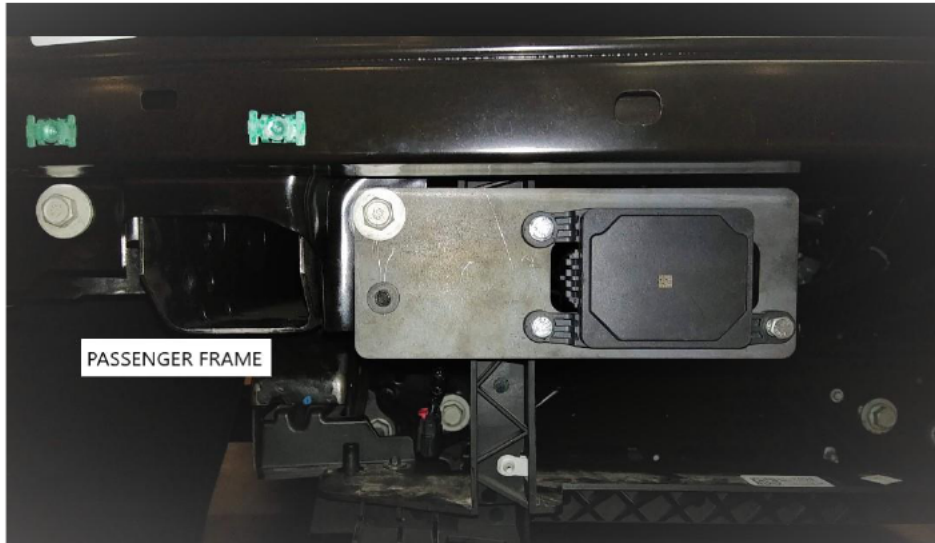


1.877.287.8634

INSTALLATION INSTRUCTIONS

IMPORTANT NOTICE: Be sure to inspect and test fit product before having it coated or painted. Ranch Hand will not be responsible for the cost of the coating if any problems with fit or finish are not noted and addressed beforehand.

24. Mount the Adaptive Cruise Module to the supplied adaptive cruise bracket with ¼" hardware supplied. Mount the bracket to the frame using factory hardware.



25. Reinstall Front Fascia, Air Inlet Grille Panel, Hood Latch and Wheelhouse Liner.

26. Continue back to steps 5-10.

----- **WARNING** -----

Special care should be exercised in the handling, storage and installation of Ranch Hand equipment.

The actual weight of each piece of equipment will vary depending on style and model. The weight of the equipment is sufficient in volume to warrant special care, assistance and in some instances, the use of mechanical equipment during the transfer and installation of the equipment.

Do not assume a position directly under the equipment during installation. Be sure the equipment has been connected and stabilized during installation to prevent falling or shifting of positions.

Periodically check tightness of bolts to make sure they are tight, and unlikely to fail.

Rev. 2022