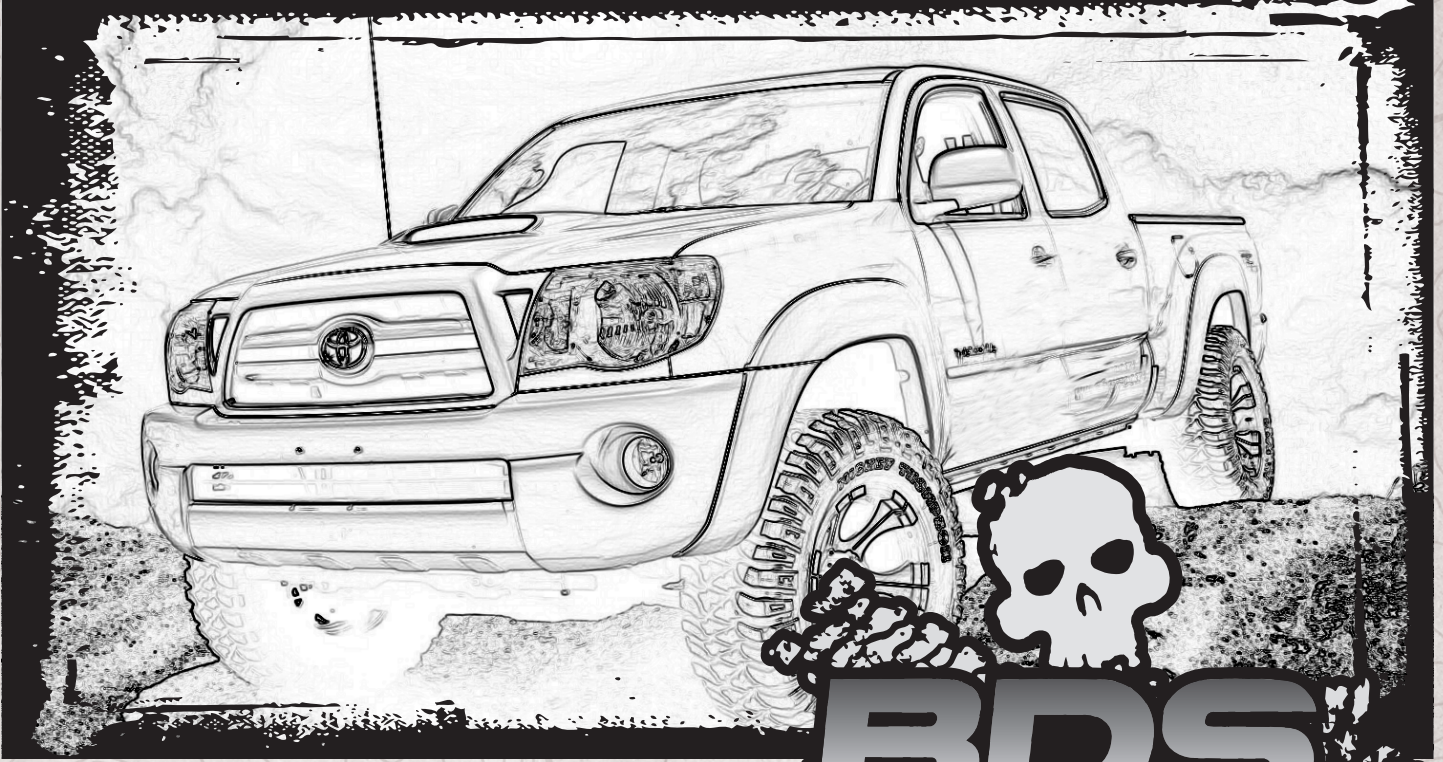


INSTALLATION GUIDE



Part#: 028251



HARDCORE LIMITED LIFETIME WARRANTY

2.5" Strut Spacer Lift

Toyota Tacoma 4WD | 2005-2023

Toyota Tacoma 2WD (6 lug only) | 2005-2015

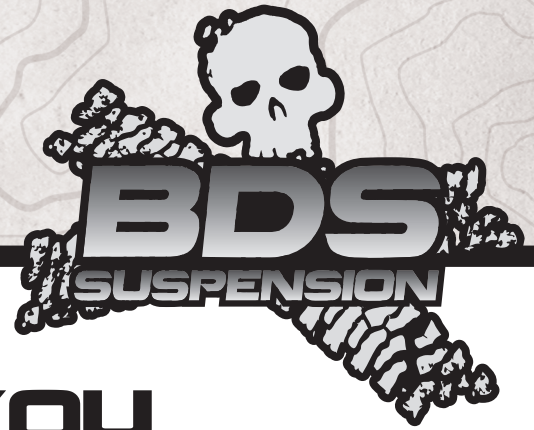
Toyota Tacoma 2WD | 2016-2023

491 W. Garfield Ave., Coldwater, MI 49036 • Phone: 517-279-2135

Rev. 121522

Web/live chat: www.bds-suspension.com • E-mail: tech@bds-suspension.com

Read And Understand All Instructions And Warnings Prior To Installation Of System And Operation Of Vehicle.



THANK YOU

Your truck is about to be fitted with the best suspension system on the market today. That means you will be driving the baddest looking truck in the neighborhood, and you'll have the warranty to ensure that it stays that way for years to come.

Thank you for choosing BDS Suspension!

BEFORE YOU START

BDS Suspension Co. recommends this system be installed by a professional technician. In addition to these instructions, professional knowledge of disassembly/ reassembly procedures and post installation checks must be known.

FOR YOUR SAFETY

Certain BDS Suspension products are intended to improve off-road performance. Modifying your vehicle for off-road use may result in the vehicle handling differently than a factory equipped vehicle. Extreme care must be used to prevent loss of control or vehicle rollover. Failure to drive your modified vehicle safely may result in serious injury or death. BDS Suspension Co. does not recommend the combined use of suspension lifts, body lifts, or other lifting devices. You should never operate your modified vehicle under the influence of alcohol or drugs. Always drive your modified vehicle at reduced speeds to ensure your ability to control your vehicle under all driving conditions. Always wear your seat belt.

BEFORE INSTALLATION

- Special literature required: OE Service Manual for model/year of vehicle. Refer to manual for proper disassembly/reassembly procedures of OE and related components.
- Adhere to recommendations when replacement fasteners, retainers and keepers are called out in the OE manual.
- Larger rim and tire combinations may increase leverage on suspension, steering, and related components. When selecting combinations larger than OE, consider the additional stress you could be inducing on the OE and related components.
- Post suspension system vehicles may experience drive line vibrations. Angles may require tuning, slider on shaft may require replacement, shafts may need to be lengthened or trued, and U-joints may need to be replaced.
- Secure and properly block vehicle prior to installation of BDS Suspension components. Always wear safety glasses when using power tools.
- If installation is to be performed without a hoist, BDS Suspension Co. recommends rear alterations first.
- Due to payload options and initial ride height variances, the amount of lift is a base figure. Final ride height dimensions may vary in accordance to original vehicle attitude. Always measure the attitude prior to beginning installation.



Visit 560plus.com for more information.

TIRES AND WHEELS

FITMENT GUIDE

265/75R17 Tire
5-1/4" Backspace



BEFORE YOU DRIVE

Check all fasteners for proper torque. Check to ensure for adequate clearance between all rotating, mobile, fixed, and heated members. Verify clearance between exhaust and brake lines, fuel lines, fuel tank, floor boards and wiring harness. Check steering gear for clearance. Test and inspect brake system.

Perform steering sweep to ensure front brake hoses have adequate slack and do not contact any rotating, mobile or heated members. Inspect rear brake hoses at full extension for adequate slack. Failure to perform hose check/ replacement may result in component failure. Longer replacement hoses, if needed can be purchased from a local parts supplier.

Perform head light check and adjustment.

Re-torque all fasteners after 500 miles. Always inspect fasteners and components during routine servicing.

CONTENTS OF YOUR KIT



Box Kit		
Part #	Qty	Description
	2	Front Strut Spacer
	1	Bolt Pack - Front - #629

INSTALLATION INSTRUCTIONS

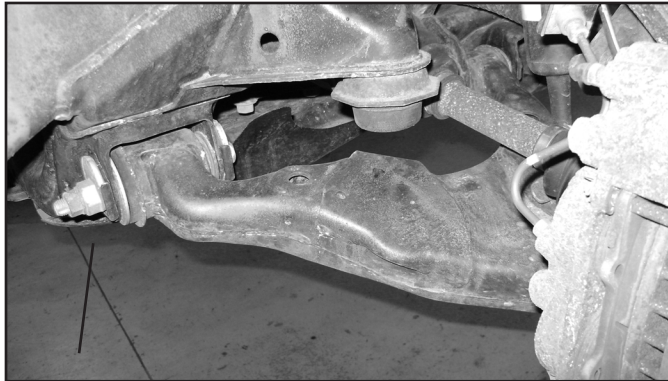
SPECIAL TOOLS

Cut-off Tool or Grinder (step 8)

FRONT INSTALLATION

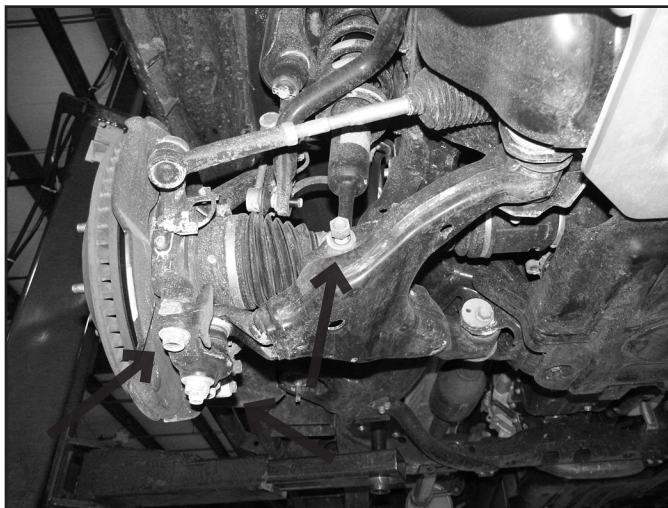
1. Park the vehicle on a clean, flat surface and block the rear wheels for safety.
2. Raise the front of the vehicle and support with jack stands under the frame rails, behind the suspension.
3. Remove the front wheels.
4. Locate the lower alignment cam bolts. (Fig. 1) Loosen the bolts (2 per arm - 4 total). This will allow the lower control arm to swing down and out of the way when the strut is disconnected.

FIGURE 1



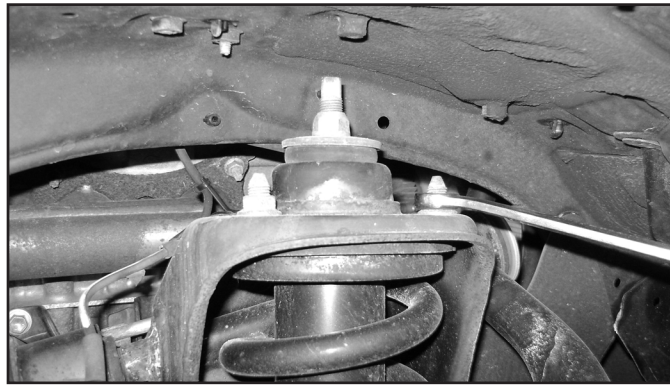
5. Remove the 2 lower ball joint mount bolts from the steering knuckle. (Fig. 2) Save bolts.
6. Remove the lower strut mount bolt at the lower control arm. (Fig. 2) Swing the lower control arm down and out of the way. Save hardware.

FIGURE 2



7. Locate the 3 upper strut mount nuts. (Fig 3) Remove the nuts and remove the strut from the vehicle. Do not remove the center strut rod nut. It is under extreme pressure. Save nuts.

FIGURE 3



8. The tips of the factory mounting studs need to be trimmed off approximately 1/8". This can be done with a grinder or cut-off tool. Trimming the studs will ensure the ends set below the top surface of the new spacer once it is installed. (Fig. 4A/B)

FIGURE 4A

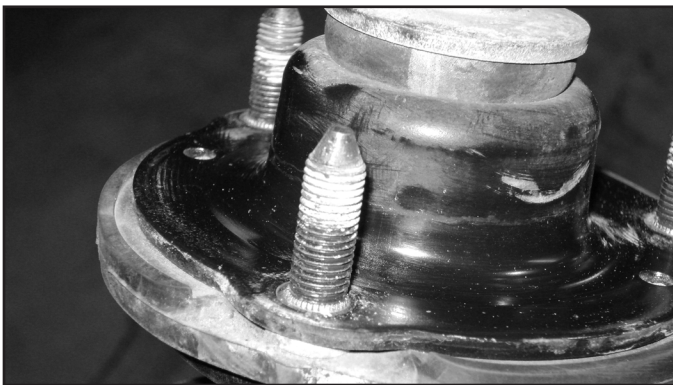
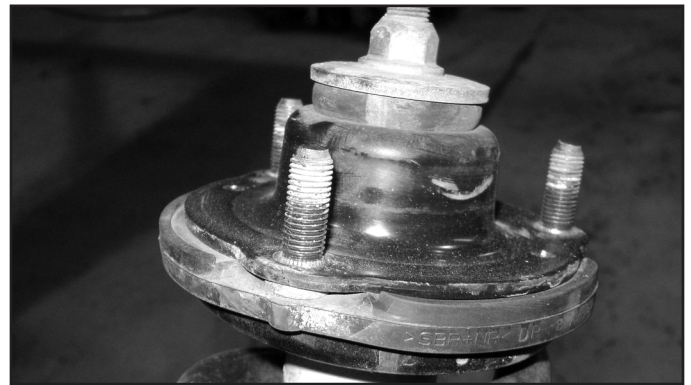


FIGURE 4B



9. Locate one of the supplied strut spacers and install on the factory upper strut mount studs. Fasten with the original nuts and tighten securely (Approx. 45 ft-lbs). (Fig. 5)



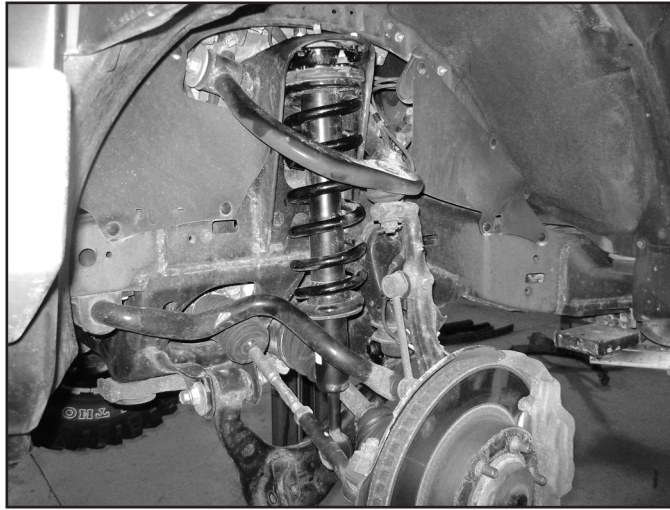
Tip Mounting hardware is located in hardware pack #629.

FIGURE 5



10. Install the strut assembly back in the vehicle and fasten to the original frame mount with the provided 10mm nuts and washers. (Fig. 6)
Torque nuts to 45 ft-lbs.

FIGURE 6



11. Swing the lower control arm up and fasten to the strut with the original factory hardware. Leave hardware loose.
12. Repeat the strut removal/assembly on the opposite side of the vehicle.
13. With both struts reattached to the frame, reconnect the lower control arm/ball joint assembly to the steering knuckles with the factory bolts. A floor jack can be used to raise the lower control arm. Use Loctite on the bolt threads and torque bolts to 110 ft-lbs.
14. With both sides assembled, install the wheels and lower the vehicle to the ground. Torque lug nuts to 80 ft-lbs.
15. Bounce the front of the vehicle to settle the suspension. Torque the lower control arm cam bolts to 100 ft-lbs. Torque the lower strut bolts to 100 ft-lbs.

POST-INSTALLATION

16. Check all hardware for proper torque.
17. The vehicle will need a complete front end alignment.
18. Adjust headlights.
19. Check hardware after 500 miles.



WE WANT TO SEE YOUR RIDE!

Grab photos of your BDS-equipped truck in action and send them in for a chance to be featured. Send it in to our Bad Ass Rides customer gallery at bds-suspension.com/bar and post them on the BDS Fan Page on Facebook at facebook.com/BDSSuspensions. Don't forget about your BDS swag! BDS offers t-shirts, hoodies, decals and more available on the BDS website or through your local BDS distributor.

TIME TO HAVE SOME FUN

Thank you for choosing BDS Suspension.

For questions, technical support and warranty issues relating to this BDS Suspension product, please contact your distributor/installer before contacting BDS Suspension directly.